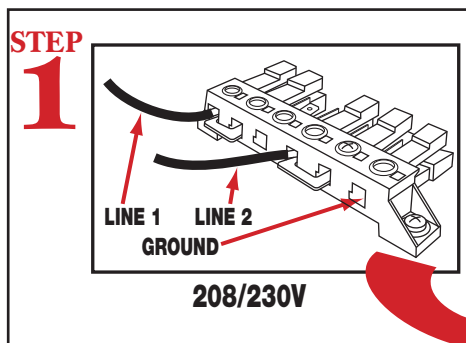
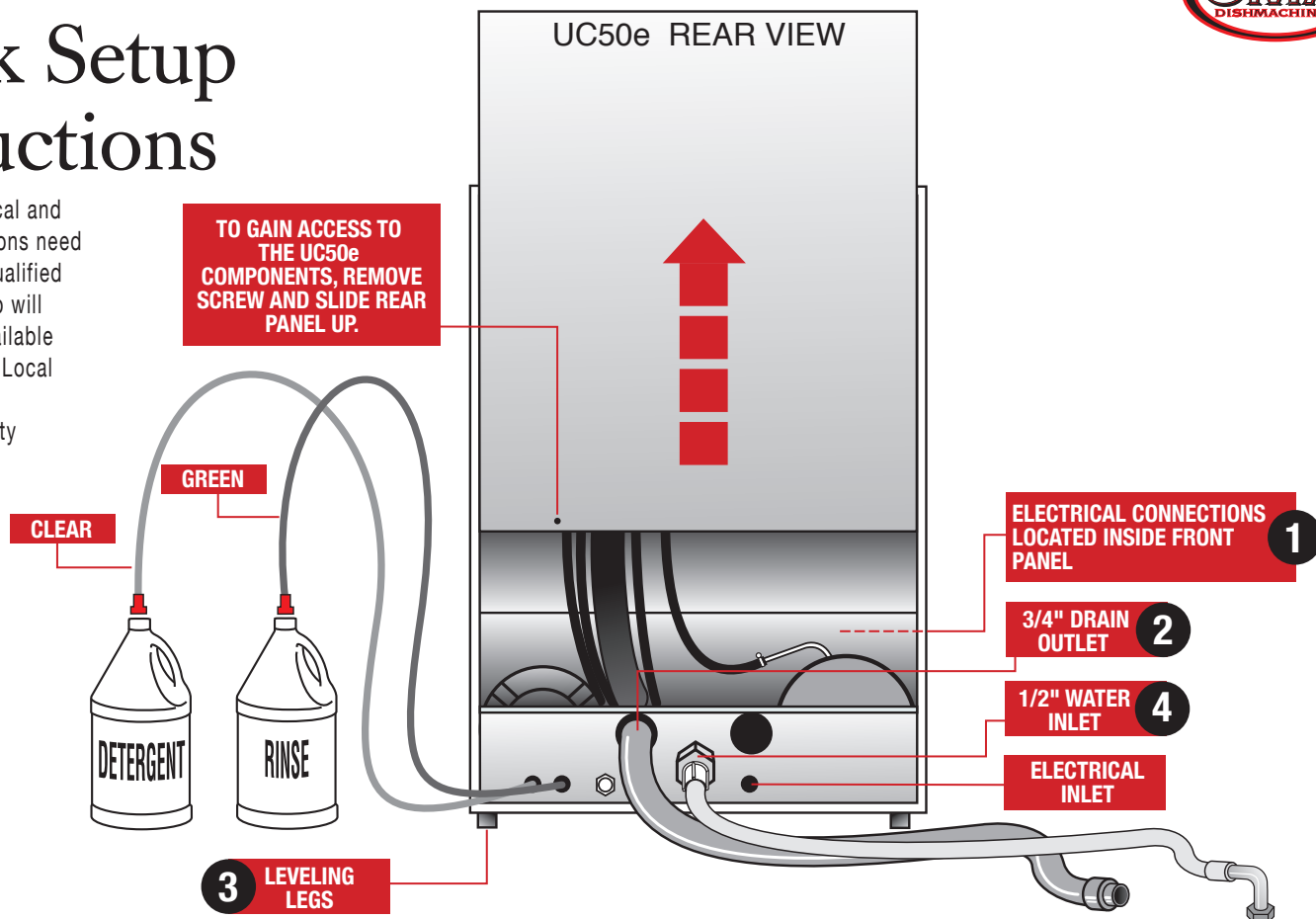


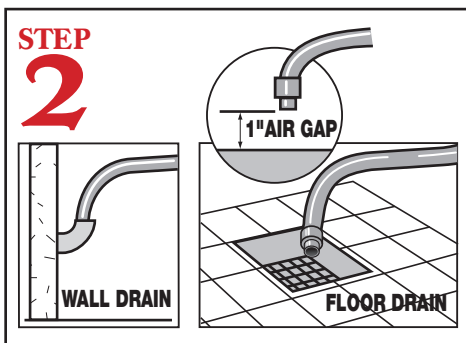
UC50e

Quick Setup Instructions

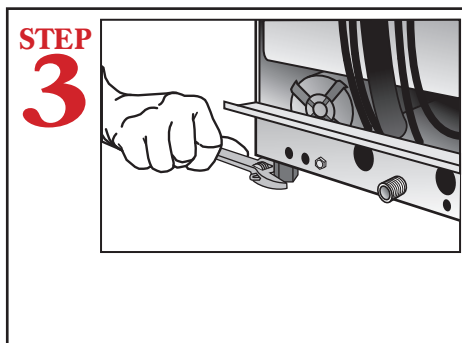
WARNING: Electrical and plumbing connections need to be made by a qualified service person who will comply with all available Federal, State and Local Health, Electrical, Plumbing and Safety codes.



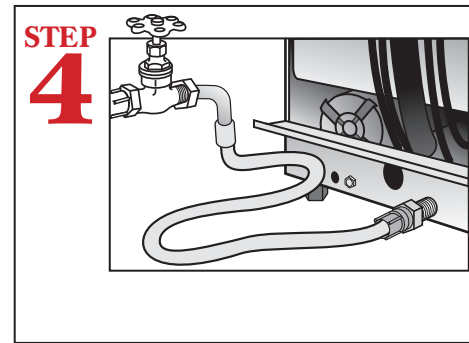
Connect lines 1 and 2 to electrical block located inside front panel.



Connect the drain hose to wall or floor drain. The floor drain must have a 1 inch air gap between drain hose and floor drain.



Level dishmachine by adjusting leveling legs. Dishmachine must be level front and back to ensure proper performance.



Connect dishmachine to hot water source, minimum temperature 120F, better results at 140F.

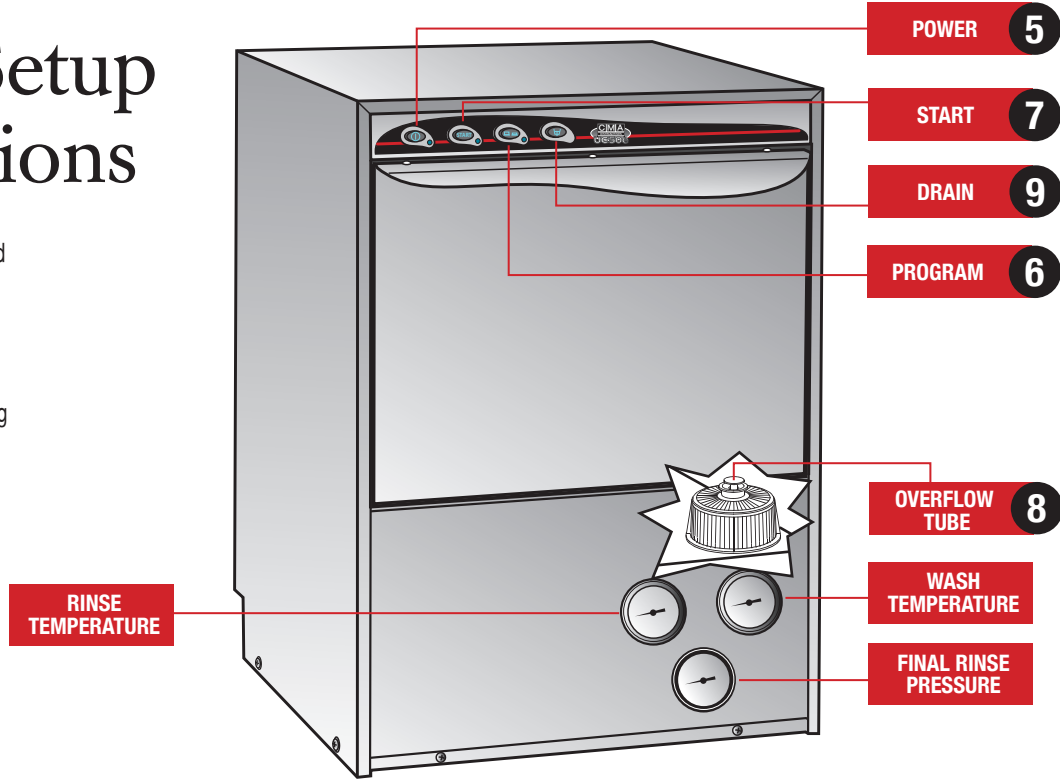
UC50e

Quick Setup Instructions

WARNING: Electrical and plumbing connections need to be made by a qualified service person who will comply with all available Federal, State and Local Health, Electrical, Plumbing and Safety codes.



UC50e FRONT VIEW



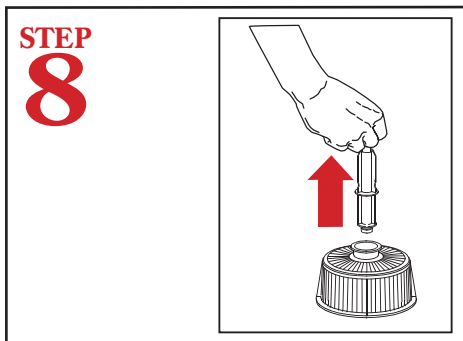
STEP 5
Push the power button to turn on the dishmachine. Wash tank will fill automatically. Wait for 15-20 minutes before wash temperature reaches 155F-160F (check wash temp gauge).



STEP 6
Push button to change time cycle. Push to the "IN" position to run for 120 seconds and the "OUT" position for 180 second run.



STEP 7
Push the "START" button to activate the dishmachine.



STEP 8
At the end of the day, push the power button (STEP 5) to turn power off. When draining the dishmachine, remove overflow tube located inside the wash tank.



STEP 9
With the overflow tube removed, push drain button to empty dishmachine. Reinstall overflow tube when drain cycle is complete.