



# EST-44L

Low Temperature  
44" Conveyor  
Dishwasher

Water Consumption  
**Only .49 Gallons**  
Per Rack of Dishes  
Meets ENERGY STAR



Model shown as Left to Right.  
Also available as Right to Left.

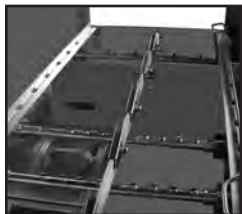


## FEATURES:

- **Energy Star Qualified.**
- Automatic water control system.
- 243 racks / 970 covers per hour.
- Economical to operate. Uses only .49 gallons of water per rack of dishes.
- Single control switch activation.
- Power rinse heater system.
- Unique 3-stage washing process provides wash, power rinse and final rinse all in a 44" machine.
- Automatic soil purging system filters wash water and traps plate debris into an external tray. Tray can be easily removed for cleaning.
- All stainless steel construction offers durable performance and years of trouble-free operation.
- Chemical resistant industrial heaters are proven to be more durable than commercial grade heaters.
- Large 19" opening accommodates larger items and utensils.
- Auto start/stop makes operation more energy efficient.
- Easy to remove and replace curtains for cleaning.
- Includes table limit switch and rack saver clutch system that protects the machine, dishracks and table from damage.
- Stainless steel chemical injection chamber.



New energy efficient oil-free drive system.



Strategically located spray arms with spray pattern positioned for additional wash coverage.



Large 19" opening accommodates larger items and utensils.



Shown with optional cornerfeed table. Available right or left.



Easy to remove wash arms with captive end caps. **Never lose another end cap again!**



New user friendly single action control switch with easy access and easy to clean around control box.

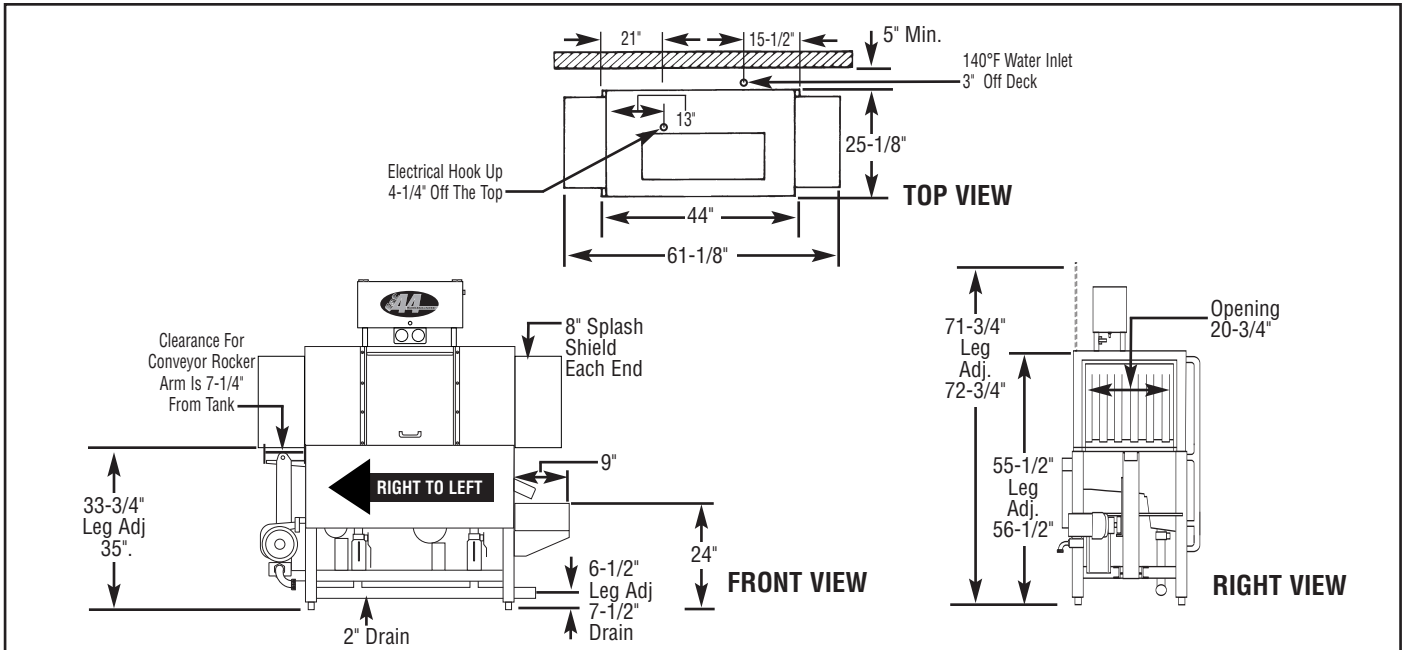




# EST-44L

Chemical Sanitizing  
44" Conveyor  
Dishwasher

**WARNING:** Plumbing connections must be made by a qualified service company who will comply with all (necessary) Federal, State, and Local Health, Plumbing and Safety codes.



### Specifications:

	USA	METRIC		USA	METRIC	
<b>OPERATING CAPACITY</b> RACKS PER HOUR (NSF RATED)	243	243	<b>DIMENSIONS</b>			
<b>CONVEYOR SPEED</b>	6.75 FT./MIN.	(206 CM./MIN.)	DEPTH	25-1/8"	(64cm)	
<b>WASH PUMP MOTORS HP</b>	1	1	WIDTH	44"	(111.7cm)	
<b>RINSE PUMP MOTOR HP</b>	1/3	1/3	HEIGHT	55-1/2"-56-1/2"	(140.97-143.51cm)	
<b>CONVEYOR MOTOR HP</b>	1/3	1/3	STANDARD TABLE HEIGHT	34"	(86cm)	
<b>WATER INLET - FILL</b>	1/2"	(1.27cm)	MAX HEIGHT CLEARANCE	19"	(48cm)	
<b>WATER INLET - FINAL RINSE</b>	1/2"	(1.27cm)	<b>STANDARD DISHRACK</b>	1	1	
<b>DRAIN SIZE</b>	2"	(5.1cm)	DIMENSIONS	19-3/4"X19-3/4"	(50X50cm)	
<b>FINAL RINSE PRESSURE</b>	20 ± 5psi	(1.41 kg/cm <sup>2</sup> )	<b>ELECTRICAL RATING</b>	<b>VOLTS</b>	<b>PHASE</b>	<b>AMPS</b>
<b>WASH TANK CAPACITY</b>				208	1	69
PRE-RINSE	4.25 GAL	(16.0 L)		240	1	76
WASH	11.75 GAL	(44.5 L)		208	3	46
TOTAL	16.0 GAL	(60.5 L)		240	3	51
<b>WASH PUMP CAPACITY</b>			<b>WASH TANK HEATER</b>	10kW		
EACH	52 GPM	(197 LPM)	<b>RINSE TANK HEATER</b>	3kW		
<b>OPERATING TEMPERATURE</b>			<b>SPECIFY DIRECTION OF RACK TRAVEL (RIGHT TO LEFT, LEFT TO RIGHT) WHEN ORDERING</b>			
WASH RECOMMENDED	140°F-150°F	(60°C/65.5°C)	<b>SHIPPING WEIGHT</b>			
PUMPED RINSE RECOMMENDED	140°F-150°F	(60°C/65.5°C)	APPROXIMATE			
FINAL RINSE RECOMMENDED	140°F-150°F	(60°C/65.5°C)	662# (300kg)			
<b>WATER CONSUMPTION</b>						
PER RACK (FINAL RINSE)	.49 GAL	(1.8 L)				
PER HOUR (FINAL RINSE)	119 GPH	(450 LPH)				

### Summary Specifications: Model EST-44L

The Model EST-44L low energy, chemical sanitizing conveyor dishwasher meets ETL, UL, and CUL sanitation and construction standards WITHOUT the use of a BOOSTER HEATER. The EST-44L performs three separate washing functions including a built-in power rinse, all in a 44" space. The EST-44L washes up to 243 racks per hour and uses a minimum .49 gallons of water per rack while achieving sparkling, clean, dry dishes. Constructed entirely of stainless steel.

#### Available Models

- EST-44L R/L Right to Left
- EST-44L L/R Left to Right

#### Available Options

- Corner Feed Table (**FACTORY INSTALLED ONLY**)
- Alternative electrical options
- Stainless steel dishtables
- Vent Hood with 4" X 16" Vent and Damper Control (2 per set)
- Motor Cover

