



# EST-44H

High Temperature  
44" Conveyor  
Dishwasher

Water Consumption  
**Only .49 Gallons**  
Per Rack of Dishes  
Meets ENERGY STAR

OPTIONAL VENT  
HOODS



Model shown as Left to Right.  
Also available as Right to Left.



## FEATURES:

- **Energy Star Qualified.**
- Automatic water control system.
- 243 racks / 970 covers per hour.
- Economical to operate. Uses only .49 gallons of water per rack of dishes.
- Single control switch activation.
- Power rinse heater system.
- Unique 3-stage washing process provides wash, power rinse and final rinse all in a 44" machine.
- Automatic soil purging system filters wash water and traps plate debris into an external tray. Tray can be easily removed for cleaning.
- All stainless steel construction offers durable performance and years of trouble-free operation.
- Chemical resistant industrial heaters are proven to be more durable than commercial grade heaters.
- Large 19" opening accommodates larger items and utensils.
- Auto start/stop makes operation more energy efficient.
- Easy to remove and replace curtains for cleaning.
- Includes table limit switch and rack saver clutch system that protects the machine, dishracks and table from damage.
- Stainless steel chemical injection chamber.



New energy efficient oil-free drive system.



Strategically located spray arms with spray pattern positioned for additional wash coverage.



Large 19" opening accommodates larger items and utensils.



Shown with optional cornerfeed table. Available right or left.



Easy to remove wash arms with captive end caps. **Never lose another end cap again!**



New user friendly single action control switch with easy access and easy to clean around control box.

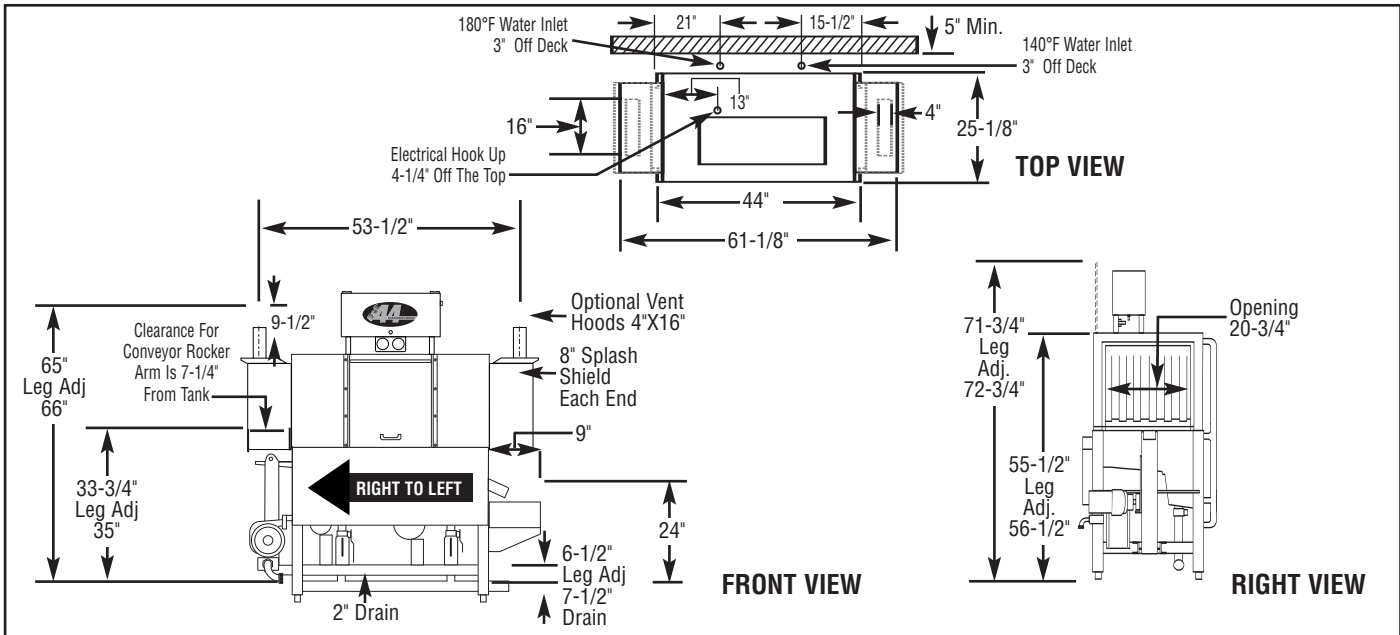




# EST-44H

High Temperature  
44" Conveyor  
Dishwasher

**WARNING:** Plumbing connections must be made by a qualified service company who will comply with all (necessary) Federal, State, and Local Health, Plumbing and Safety codes.



**Specifications:**

| MODEL EST-44H  | USA             | METRIC                     | USA         | METRIC |
|--|-----------------|----------------------------|-------------|--------|
| <b>OPERATING CAPACITY</b>  |                 |                            |             |        |
| RACKS PER HOUR (NSF RATED)   | 243             | 243                        |             |        |
| <b>CONVEYOR SPEED</b>  | 6.75 FT./MIN.   | (206 CM./MIN.)             |             |        |
| <b>WASH PUMP MOTORS HP</b>   | 1               | 1                          |             |        |
| <b>RINSE PUMP MOTOR HP</b>   | 1/3             | 1/3                        |             |        |
| <b>CONVEYOR MOTOR HP</b>   | 1/3             | 1/3                        |             |        |
| <b>WATER INLET - FILL</b>  | 1/2"            | (1.27cm)                   |             |        |
| <b>WATER INLET - FINAL RINSE</b>   | 1/2"            | (1.27cm)                   |             |        |
| <b>DRAIN SIZE</b>  | 2"              | (5.1cm)                    |             |        |
| <b>FINAL RINSE PRESSURE</b>  | 20 ± 5psi       | (1.41 kg/cm <sup>2</sup> ) |             |        |
| <b>WASH TANK CAPACITY</b>  |                 |                            |             |        |
| PRE-RINSE  | 4.25 GAL        | (16.0 L)                   |             |        |
| WASH   | 11.75 GAL       | (44.5 L)                   |             |        |
| TOTAL  | 16.0 GAL        | (60.5 L)                   |             |        |
| <b>WASH PUMP CAPACITY</b>  |                 |                            |             |        |
| EACH   | 52 GPM          | (197 LPM)                  |             |        |
| <b>OPERATING TEMPERATURE</b>   |                 |                            |             |        |
| WASH   | 150°F-160°F     | (66°C/71°C)                |             |        |
| PUMPED RINSE   | 150°F-160°F     | (66°C/71°C)                |             |        |
| FINAL RINSE  | 180°F-195°F     | (82°C/90°C)                |             |        |
| <b>WATER CONSUMPTION</b>   |                 |                            |             |        |
| PER RACK (FINAL RINSE)   | .49 GAL         | (1.8 L)                    |             |        |
| PER HOUR (FINAL RINSE)   | 119 GPH         | (450 LPH)                  |             |        |
| <b>DIMENSIONS</b>  |                 |                            |             |        |
| DEPTH  | 25-1/8"         | (64cm)                     |             |        |
| WIDTH  | 44"             | (111.7cm)                  |             |        |
| HEIGHT   | 55-1/2"-56-1/2" | (140.97-143.51cm)          |             |        |
| STANDARD TABLE HEIGHT  | 34"             | (86cm)                     |             |        |
| MAX HEIGHT CLEARANCE   | 19"             | (48cm)                     |             |        |
| <b>STANDARD DISHRACK</b>   | 1               | 1                          |             |        |
| DIMENSIONS   | 19-3/4"X19-3/4" | (50X50cm)                  |             |        |
| <b>ELECTRICAL RATING</b>   | <b>VOLTS</b>    | <b>PHASE</b>               | <b>AMPS</b> |        |
|  | 208             | 1                          | 69          |        |
|  | 240             | 1                          | 76          |        |
|  | 208             | 3                          | 46          |        |
|  | 240             | 3                          | 51          |        |
| <b>WASH TANK HEATER</b>  | 10kW            |                            |             |        |
| <b>RINSE TANK HEATER</b>   | 3kW             |                            |             |        |
| <b>SPECIFY DIRECTION OF RACK TRAVEL (RIGHT TO LEFT, LEFT TO RIGHT) WHEN ORDERING</b> |                 |                            |             |        |
| <b>SHIPPING WEIGHT</b>   |                 |                            |             |        |
| APPROXIMATE  | 662#            | (300kg)                    |             |        |

**Summary Specifications: Model EST-44H**

The Model EST-44H high temperature conveyor dishwasher meets ETL, UL, and CUL sanitation and construction standards utilizing 180°F final rinse water. The EST-44H performs three separate washing functions including a built-in power rinse, all in a 44" space. The EST-44H washes up to 243 racks per hour and uses a minimum .49 gallons of water per rack while achieving sparkling, clean, dry dishes. Constructed entirely of stainless steel.

**Available Models**

- EST-44H R/L Right to Left
- EST-44H L/R Left to Right

**Available Options**

- Corner Feed Table **(FACTORY INSTALLED ONLY)**
- Vent Hood with 4" x 16" Vent and Damper Control (2 per set)
- Alternative electrical options
- C-24 Hatco Booster Heater (40° rise), other sizes available
- Stainless steel dishtables
- Motor Cover
- Drain Water Tempering Kit

