



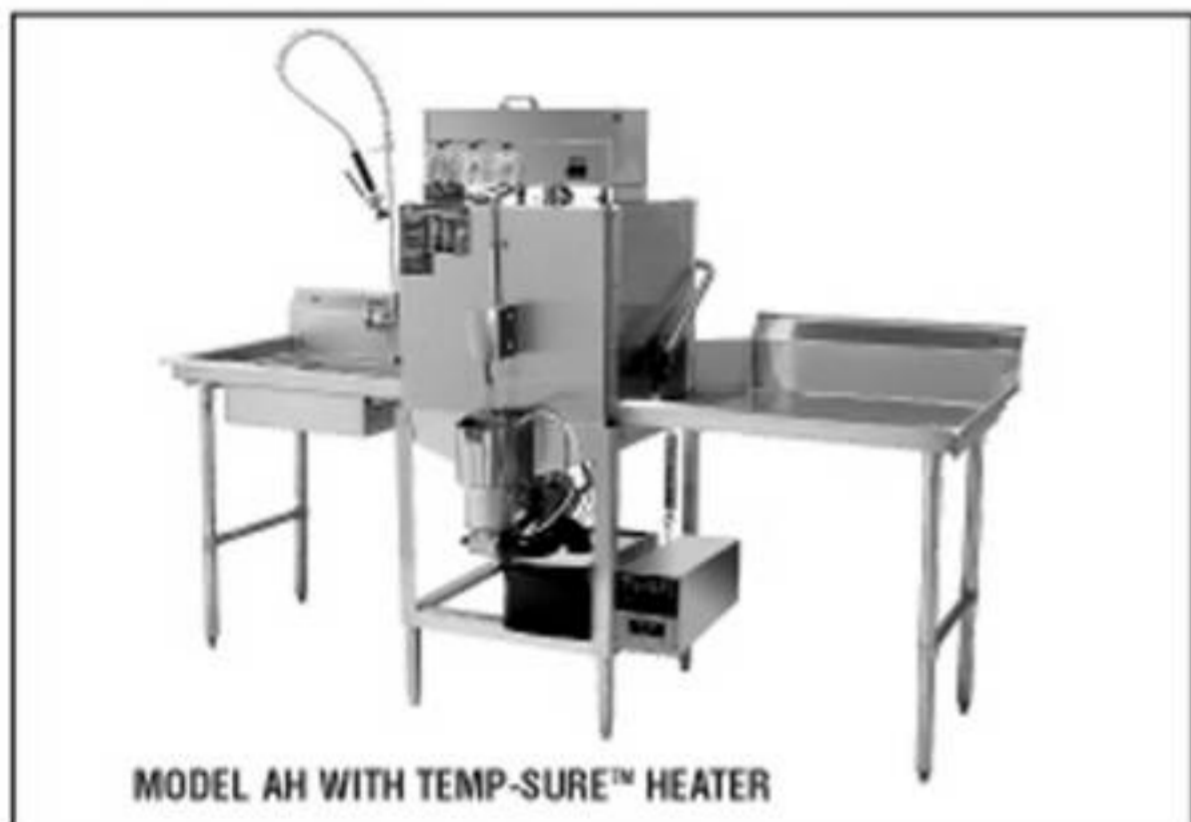
CMA TEMP-SURE™

Hot Water Assurance System
For Dump And Fill Style
Dishwashers



FEATURES:

- Specifically designed to maintain proper rinse temperatures in dump and fill style dishwasher.
- 12kW industrial heater is proven to be more durable than commercial style heater.
- Fast recovery, 40° rise in 90 seconds.
- Available 208/240 volt, single or three phase for flexible applications.
- Universal mounting system fits all single tank CMA models and most competitor model dishwashers.
- Free standing units also available.



MODEL AH WITH TEMP-SURE™ HEATER

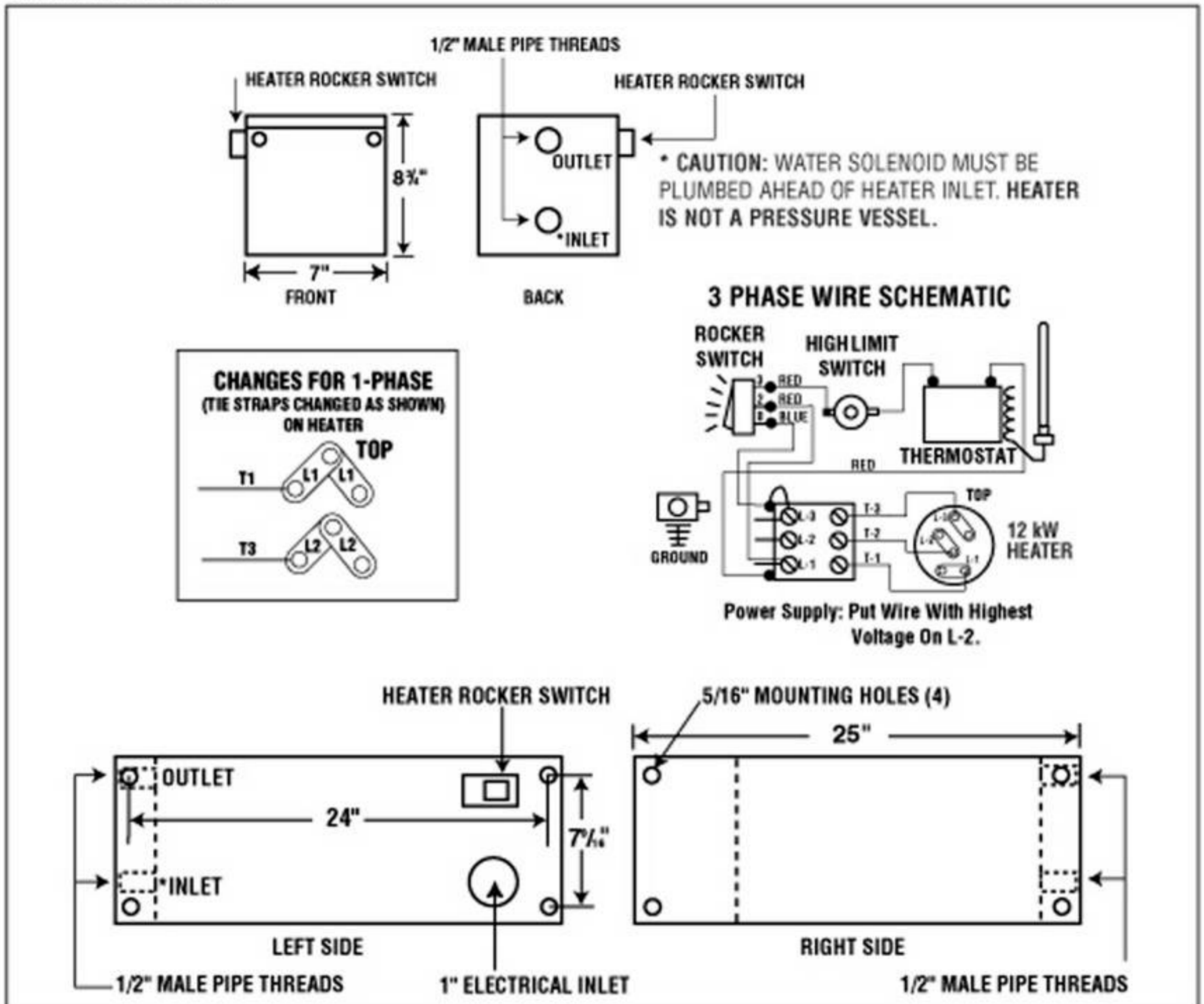


Temp-Sure™ shown as a free standing unit.



MODEL C WITH TEMP-SURE™ HEATER

WARNING: Plumbing connections need to be made by a qualified service company who will comply with all available Federal, State, and Local Health, Plumbing and Safety codes.



The CMA-Temp-Sure™ option assures a continuous supply of 140°F hot water resulting in excellent dishmachine performance. The heater is custom-designed for fill and dump CMA single tank dishwashers as a factory added option or an infield add-on. The heater will also fit most competitor's single tank dishmachines.

SPECIFICATIONS:

MODEL: CMA TEMP-SURE™		USA	METRIC
MIN. INCOMING WATER TEMP.		100°F	(55°C)
RISE		40°F	(22°C)
AVAILABLE HOT WATER		90 GPH	(341LPH)
HEATER TANK CAPACITY		2.6 GAL	(9.8L)
ELECTRICAL RATING	VOLTS	PHASE	AMPS
	208	1	44
	240	1	51
	208	3	26
	240	3	30