



# MODEL CMA-180UC

PARTS MANUAL Rev 1.18



**CMA DISHMACHINES**  
**12700 KNOTT AVENUE**  
**GARDEN GROVE, CALIFORNIA 92841**  
**800-854-6417**  
**FAX 714-895-2141**

[wwwcmadishmachines.com](http://wwwcmadishmachines.com)



# TABLE OF CONTENTS

## MODEL CMA-180UC

<b>1. PARTS MANUAL.....</b>	<b>3</b>
1.1. INITIAL PARTS KIT (P/N 1100.66).....	3
1.2. DRAIN PUMP .....	4
1.3. DRAIN PUMP REMOVAL INSTRUCTIONS .....	5
1.4. MECHANICAL DRAWINGS.....	6
1.4.1. Cabinet Assembly.....	6
1.4.2. Door Assembly.....	7
1.4.3. Electrical Tray.....	8
1.4.4. Control Panel .....	9
1.4.5. Chemical Dispenser (Optional).....	10
1.4.6. Plumbing System Assembly.....	11
1.4.7. Drain System Assembly.....	12
1.4.8. Wash System .....	13
1.4.9. Rinse System .....	14
1.4.10. S/S Pump Assembly (Effective August 2009) .....	15
1.4.11. Pump System Assembly.....	16
1.4.12. Old Heater Assembly (Square Flange).....	17
1.4.13. New Heater Assembly (Triangular Flange).....	18
1.4.14. Drain Valve.....	19



---

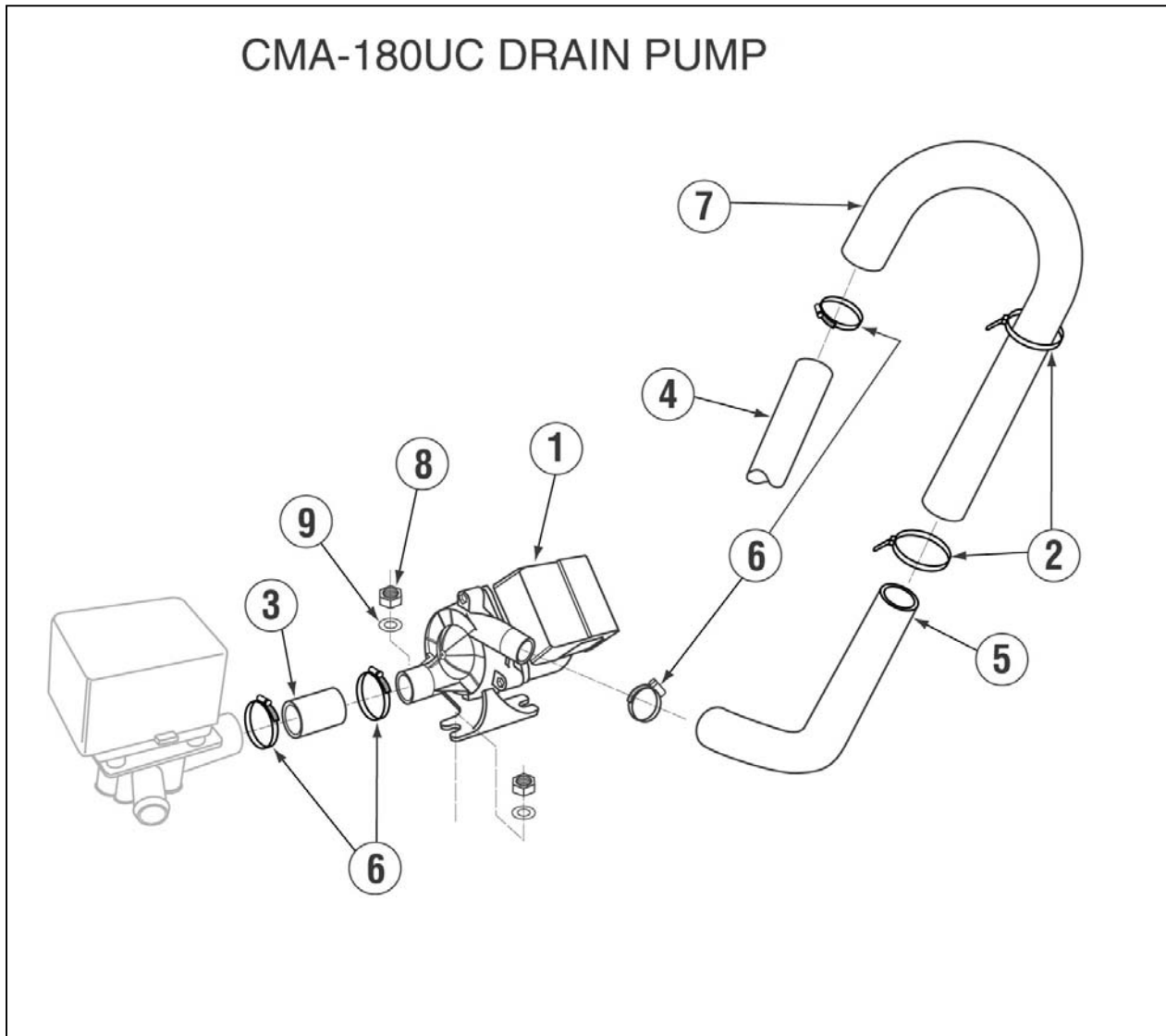
## 1. Parts Manual

---

### 1.1. Initial Parts Kit (P/N 1100.66)

P/N	DESCRIPTION	Qty
15504.00	Motor Contactor, 2-Pole 20 Amp	1
15504.50	Heater Contactor, 2-Pole 35 Amp	1
00501.00	2-Minute Timer Motor	1
00631.00	Ice Cube Relay 120 V	1
15521.00	Rocker Switch Start Momentary	1
15522.00	Rocker Switch Drain/Fill	1
15521.50	Rocker Switch Power Maintained	1
00557.55	Reed Switch	1
03623.00	1/2" Vacuum Breaker Repair Kit – Watts	1
00707.00	1/2" Water Solenoid Repair Kit – J/E	1
04103.00	L1X/L1-C Drain Valve 120V	1
00206.00	Pump Seal Kit	1
13417.89	Heater Thermostat	1
17523.60	High Limit Switch 200°F	1
00411.00	Microswitch	1
00738.15	3/4" Water Solenoid Valve Coil – J/E	1

**1.2. Drain Pump**



ITEM NO.	NO. REQ'D	P/N	DESCRIPTION
1	1	15503.00	Drain Motor Ultra Jet for CMA-180UC
2	2	00432.50	Twist Tie
3	1	15601.10	Black Drain Hose 1" ID X 3 1/2"
4	1	15601.50	Drain Hose 1" ID, 6 ft
5	1	15601.60	Robber Hose 90 Deg.

ITEM NO.	NO. REQ'D	P/N	DESCRIPTION
6	4	03101.00	Hose Clamp 1"
7	1	15603.00	Drain Line Gooseneck
8	2	03801.10	10-32 SS Nut
9	2	04806.00	#10 Brass Washer

### 1.3. Drain Pump Removal Instructions

**Drain Pump (P/N 15503.00) should only be used if a floor drain is not accessible to the machine at installation.**

When converting the UC-180 dishwasher to a gravity drain unit, remove the drain pump assembly as shown in **Figure 1**. Re-route the 6Ft drain hose to the center port were the drain pump was located, moving the displaced line to the open port of the valve. Insure there is a 1" air gap between the discharge and floor drain as shown in **Figure 2**.

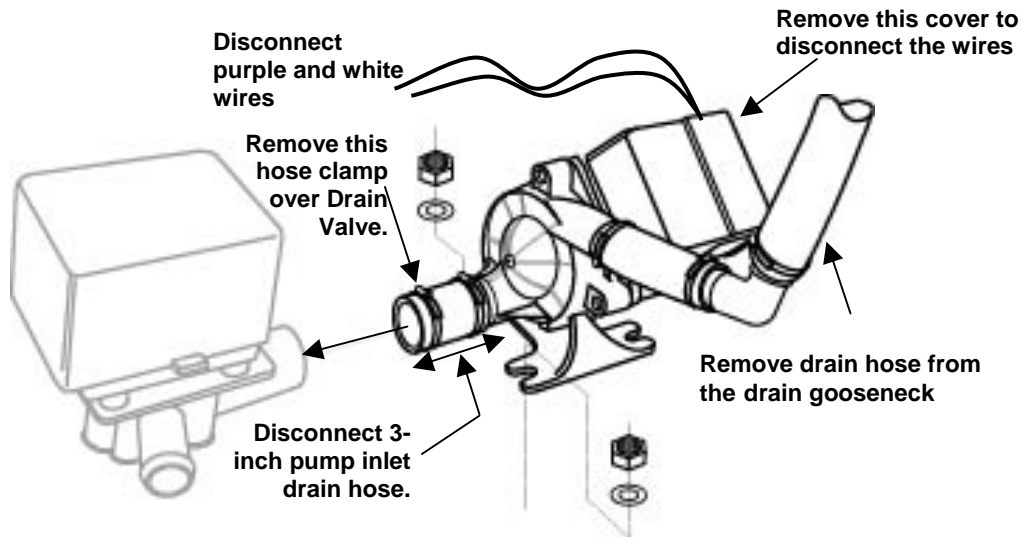


Figure 1

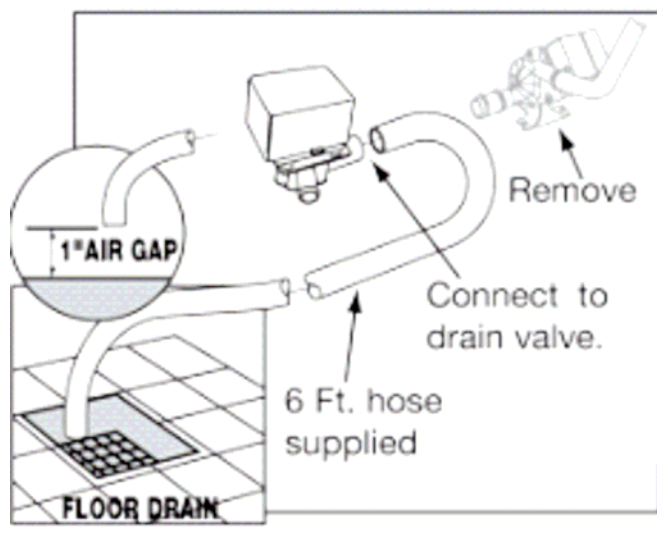
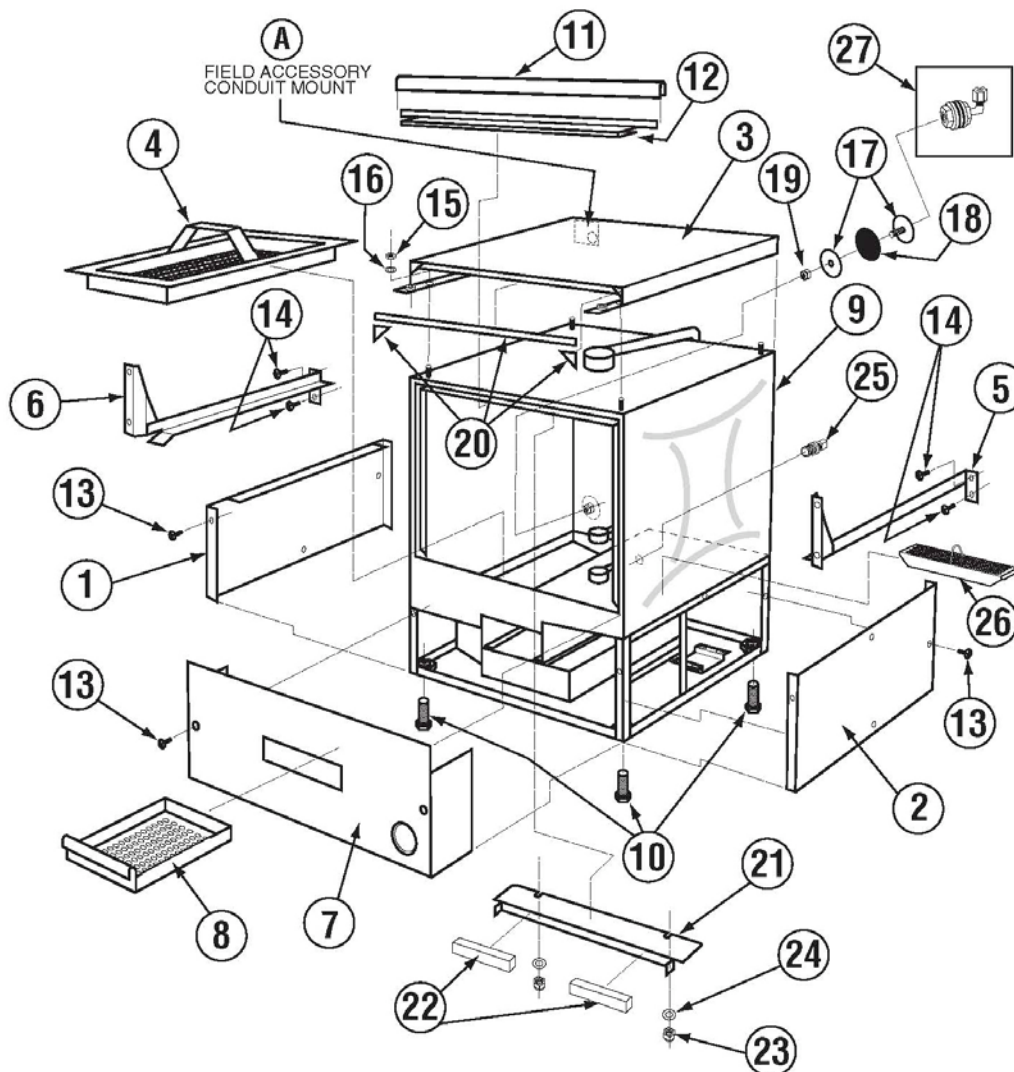


Figure 2.

### 1.4. Mechanical Drawings

#### 1.4.1. Cabinet Assembly



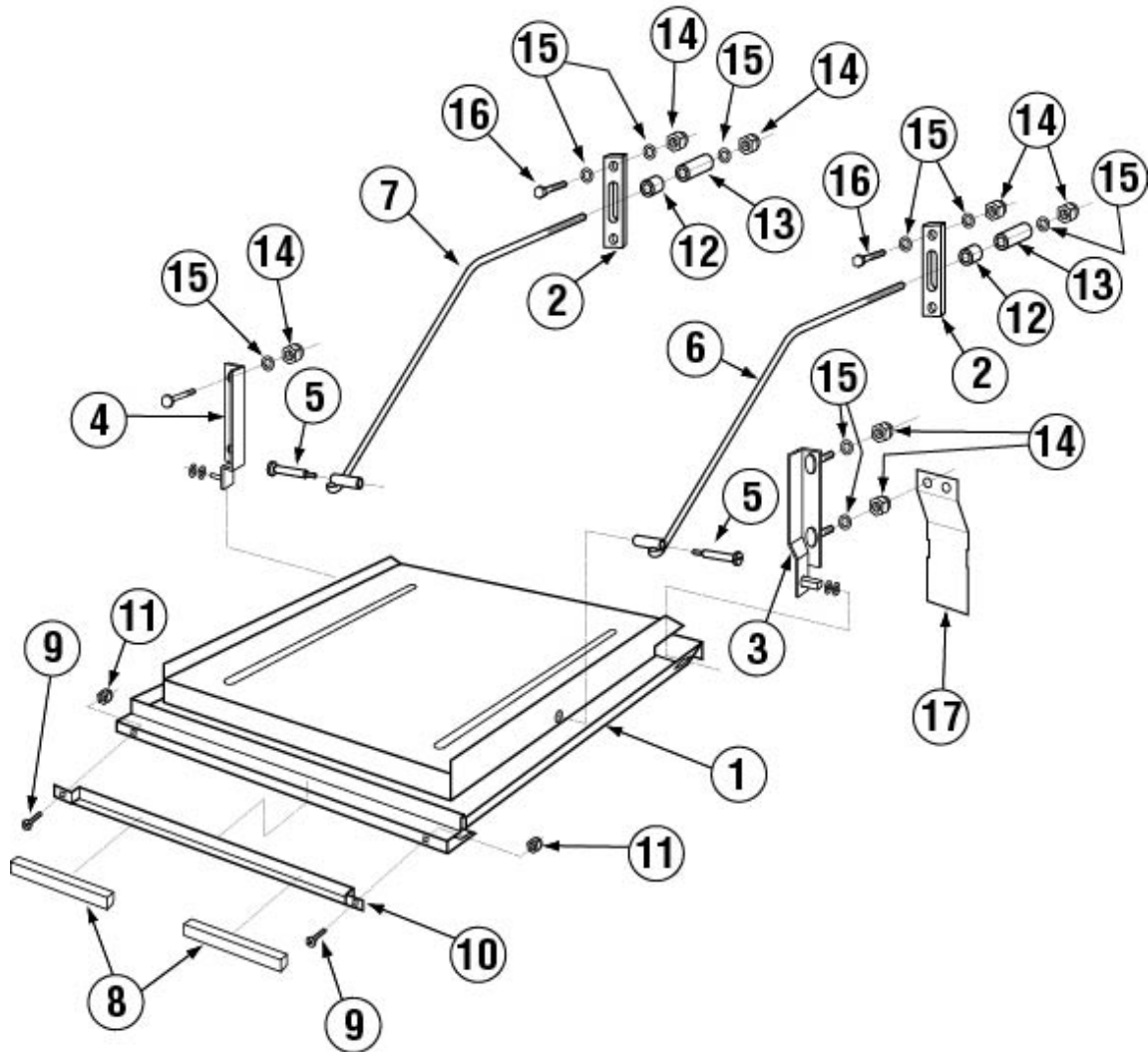
ITEM NO.	NO. REQ'D	P/N	DESCRIPTION
1	1	14502.82	Side Panel L.H. for CMA-180UC
2	1	14502.84	Side Panel R.H. for CMA-180UC
3	1	14503.50	SS Top for CMA-180UC
4	1	14510.00	Scrap Basket for CMA-180UC
5	1	14511.00	Tray Track R.H. for CMA-180UC
6	1	14512.00	Tray Track L.H. for CMA-180UC
7	1	14515.00	Lower Front Panel for CMA-180UC
8	1	14560.00	Scrap Tray Drawer for CMA-180UC
9	1	14501.00	SS Body for CMA-180UC
10	4	01310.60	Leg Adjusters for CMA-180UC
11	1	14506.50	Door Gasket for CMA-180UC
12	1	14506.45	Gasket Bracket for CMA-180UC
13	6	00940.50	10-32 x 3/8 Trusshead Screw
14	8	00941.00	10-32 x 5/8 Panhead Screw

ITEM NO.	NO. REQ'D	P/N	DESCRIPTION
15	4	03801.00	10-32 Lock Nut
16	4	00940.51	#10 Internal Lock Star Washer
17	1	01513.00	Detergent Injection Hole Plug
18	1	00752.00	Detergent Injection Hole Plug Gasket
19	1	00912.00	1/4"-20 Nylon Lock Nut
20	2ft	03705.84	Control Box Gasket for CMA-180UC
21	1	14558.00	Body Magnet Holder for CMA-180UC
22	2	00557.80	Magnet for CMA-180UC
23	2	00927.00	8-32 Lock Nut
24	2	04806.00	#10 Brass Flat Washer
25	1	00214.30	1/4" Compression x 3/8" MIP Fitting
26	1	14561.00	Scrap Trap Filter (CMA 180-UC)
27*	1	03415.00	Chemical Bulk Head

\* For the machines with chemical dispenser

1.4.2. Door Assembly

CMA-180UC DOOR ASSEMBLY

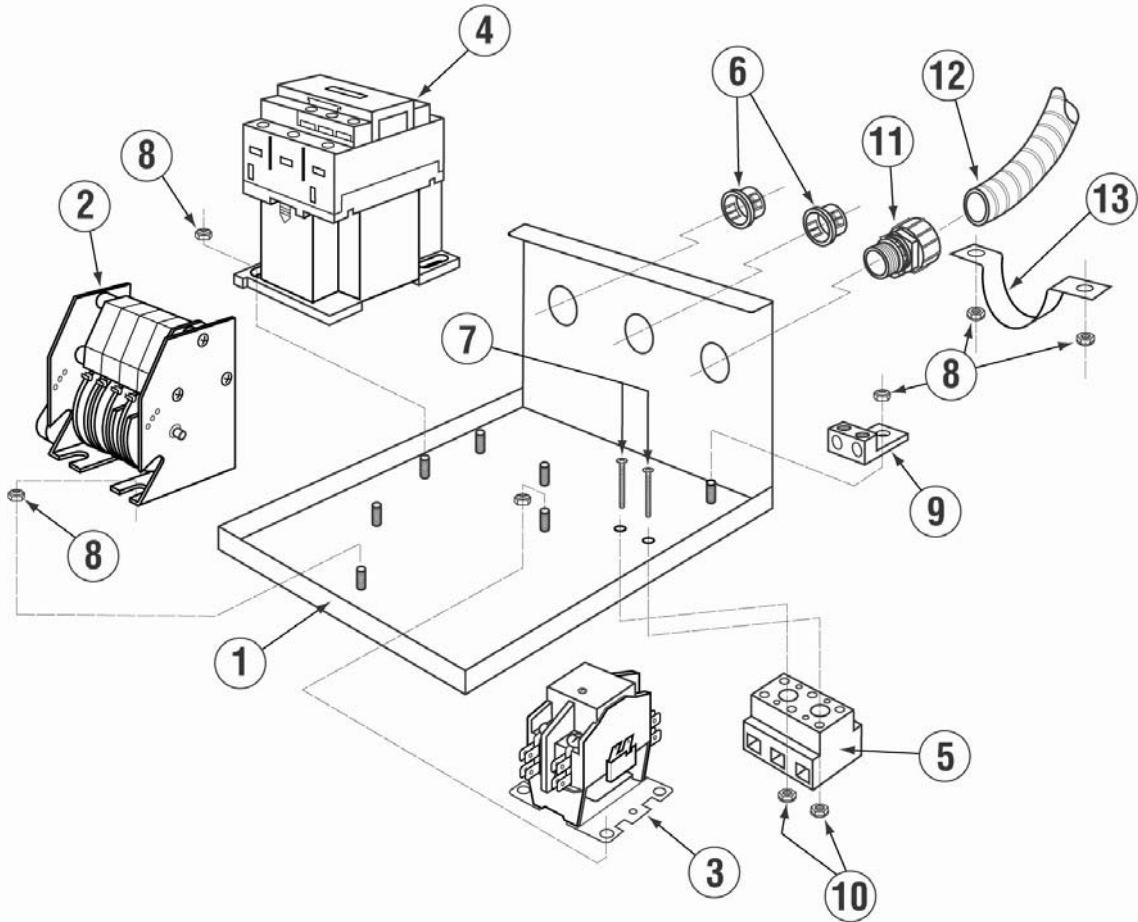


ITEM NO.	NO. REQ'D	P/N	DESCRIPTION
1	1	14506.00	Door for CMA-180UC
2	2	04517.60	Door Support Rod Block
3	1	14570.00	Door Hinge R.H. for CMA-180UC
4	1	14570.50	Door Hinge L.H. for CMA-180UC
5	2	04919.00	Door Rod Screw Pin for CMA-180UC
6	1	04918.60	Door Support Rod Right
7	1	04919.50	Door Support Rod Left
8	2	00557.80	Door Magnet
9	2	00970.60	6-32 x 1/2" Flathead Screw

ITEM NO.	NO. REQ'D	P/N	DESCRIPTION
10	1	14558.61	Door Magnet Holder for CMA-180UC
11	2	00965.00	6-32 Lock Nut
12	2	00605.20	Door Rod Spacer
13	2	04517.15	Door Stop (Parallel)
14	10	00912.00	1/4"-20 Nylon Lock Nut
15	14	00924.00	1/4" SS Washer
16	4	00914.10	1/4"-20 x 5/8" Hexhead Bolt
17	2	14518.00	Splash Guard

1.4.3. Electrical Tray

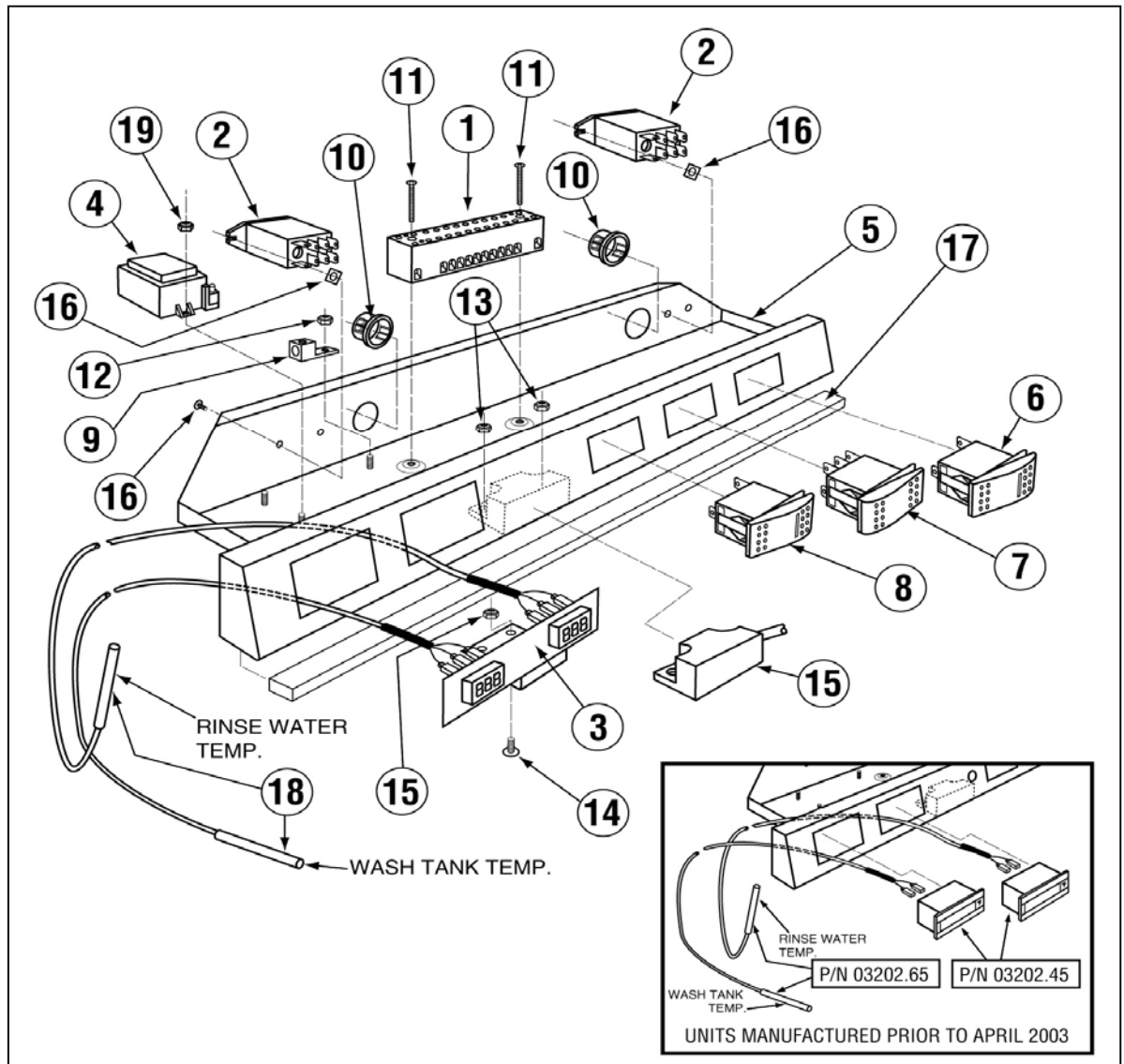
CMA-180UC ELECTRICAL TRAY



ITEM NO.	NO. REQ'D	P/N	DESCRIPTION
1	1	14504.00	Electrical Tray for CMA-180UC
2	1	14408.81	Timer 2Min 5 Cam 180-UC S.T
3	1	15504.00	Motor Contactor, 2-Pole 20 Amp
4	1	15504.50	Heater Contactor, 2-Pole 35 Amp
5	1	15520.50	Power Block, 3-Position
6	2	00438.00	Snap Bushing, Universal
7	2	01001.00	6-32 x 1" Panhead Screw

ITEM NO.	NO. REQ'D	P/N	DESCRIPTION
8	12	00927.00	8-32 Nylon Lock Nut
9	1	13426.60	Ground Block
10	2	00965.00	6-32 Lock Nut
11	1	00401.85	3/4" Conduit Connector, Straight
12	9	00400.85	3/4" Conduit, Sealtite
13	1	13304.61	HT Plumbing Bracket

1.4.4. Control Panel

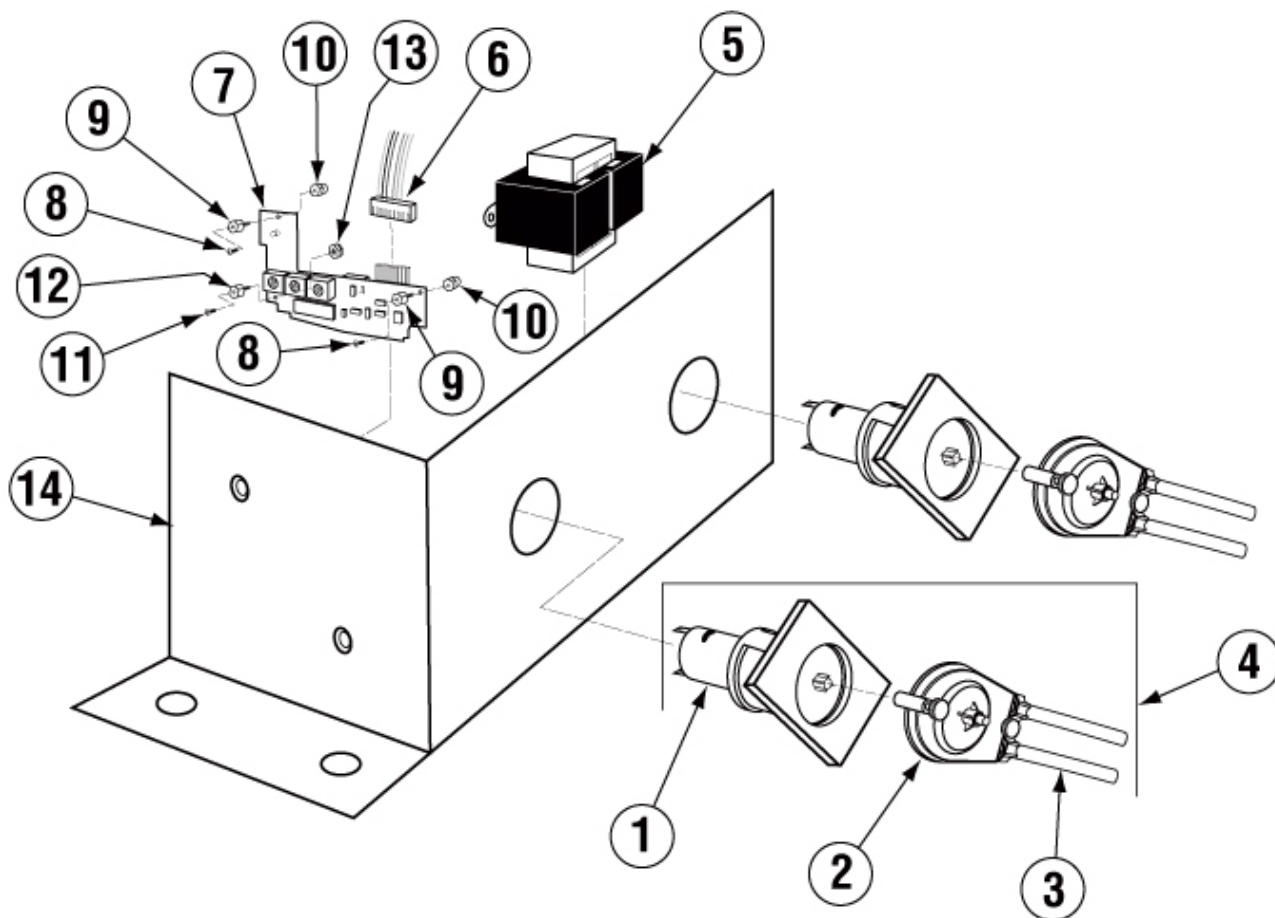


ITEM NO.	NO. REQ'D	P/N	DESCRIPTION
1	1	15520.00	Power Block 12-Position
2	2	00631.00	Ice Cube Relay 120 V
3*	1	03203.00	Dual Temperature Display Kit
4	1	03202.60	Thermometer Transformer
5	1	14503.00	Control Drawer for CMA-180UC
6	1	15523.00	Rocker Switch Start Momentary
7	1	15523.50	Rocker Switch Drain/Fill DPDT/Mom.
8	1	15524.00	Rocker Switch Power Maintained
9	1	13426.50	Ground Block
10	1	00438.00	Snap Bushing, Universal

ITEM NO.	NO. REQ'D	P/N	DESCRIPTION
11	2	01001.00	6-32 x 1" Panhead Screw
12	2	00965.00	6-32 SS Nylon Lock Nut
13	5	00927.00	8-32 Nylon Lock Nut
14	6	00911.00	8-32 x 1/2" Panhead Screw
15	1	00557.55	Reed Switch
16	4	00917.00	8-32 PM Nut
17	2	03705.82	Sponge Strip
18	2	03202.66	Thermocouple
19	2	00971.10	4-40 Nylon Lock Nut

\*Kit includes 2 of #03202.66

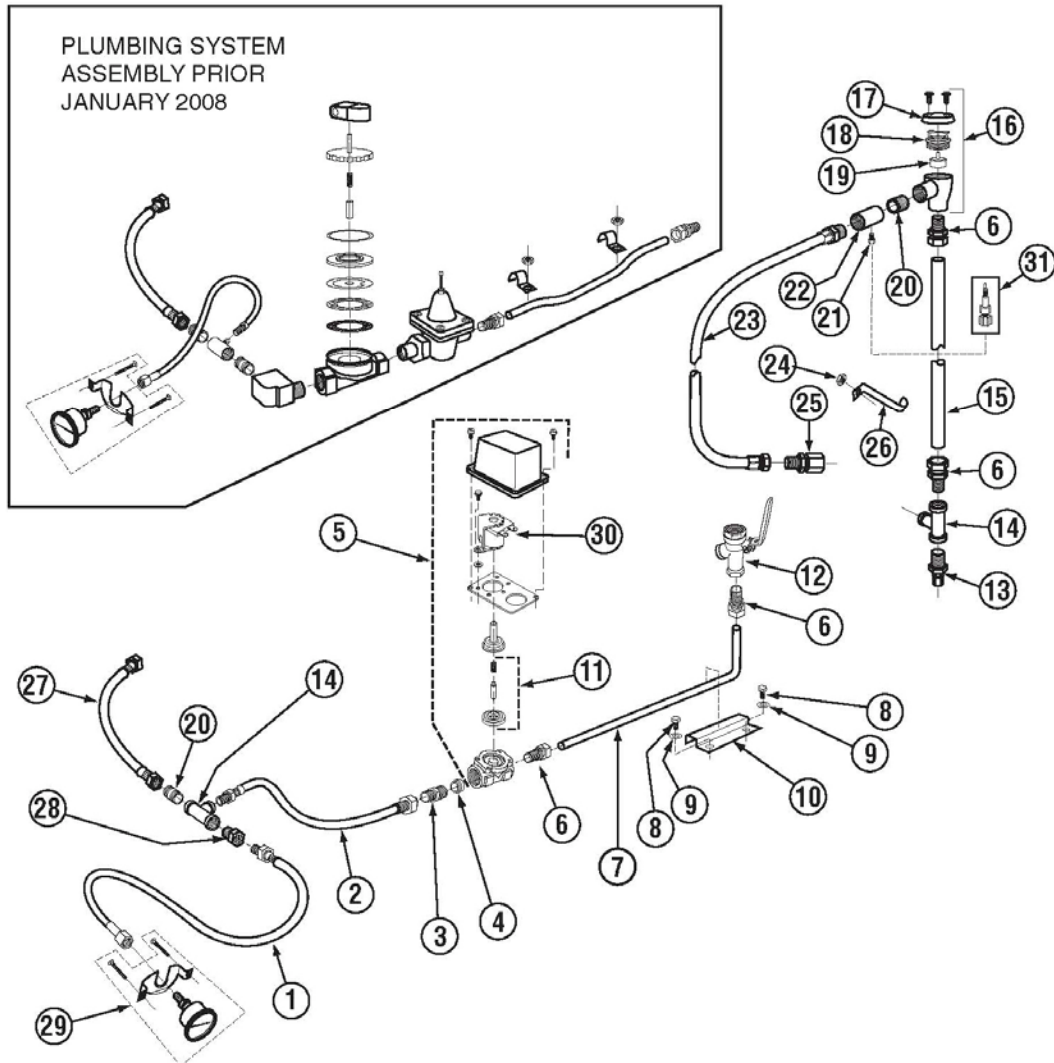
1.4.5. Chemical Dispenser (Optional)



ITEM NO.	NO. REQ'D	P/N	DESCRIPTION
1	2	00816.00	Peri Pump Gear Motor (GL-C/GW-100)
2	2	00818.00	GL-C/GW-100 Peri Pump Cartridge
3	2	00839.00	GL-C/GW-100/UC180 Sqz Tube w/ Con.
4	2	00815.00	GL-C Peri Pump Complete
5	1	00821.00	GL-C/GW-100 Transformer
6	2	00820.20	Circuit Board Connector
7	2	00820.00	GL-C/GW-100 Peri Pump Circuit Board

ITEM NO.	NO. REQ'D	P/N	DESCRIPTION
8	4	13826.47	4-40 x 3/16 Phil Pan Head Screw
9	4	00820.06	Circuit Board Standoff
10	4	00820.07	Circuit Board Standoff Cap
11	2	13826.00	4-40 X 5/8 Pan Head Screw
12	2	00820.50	Circuit Board Stand-off Bushing
13	2	00971.10	4-40 Nylon Lock Nut
14	1	14508.00	UC180 Peri Pump Box

1.4.6. Plumbing System Assembly



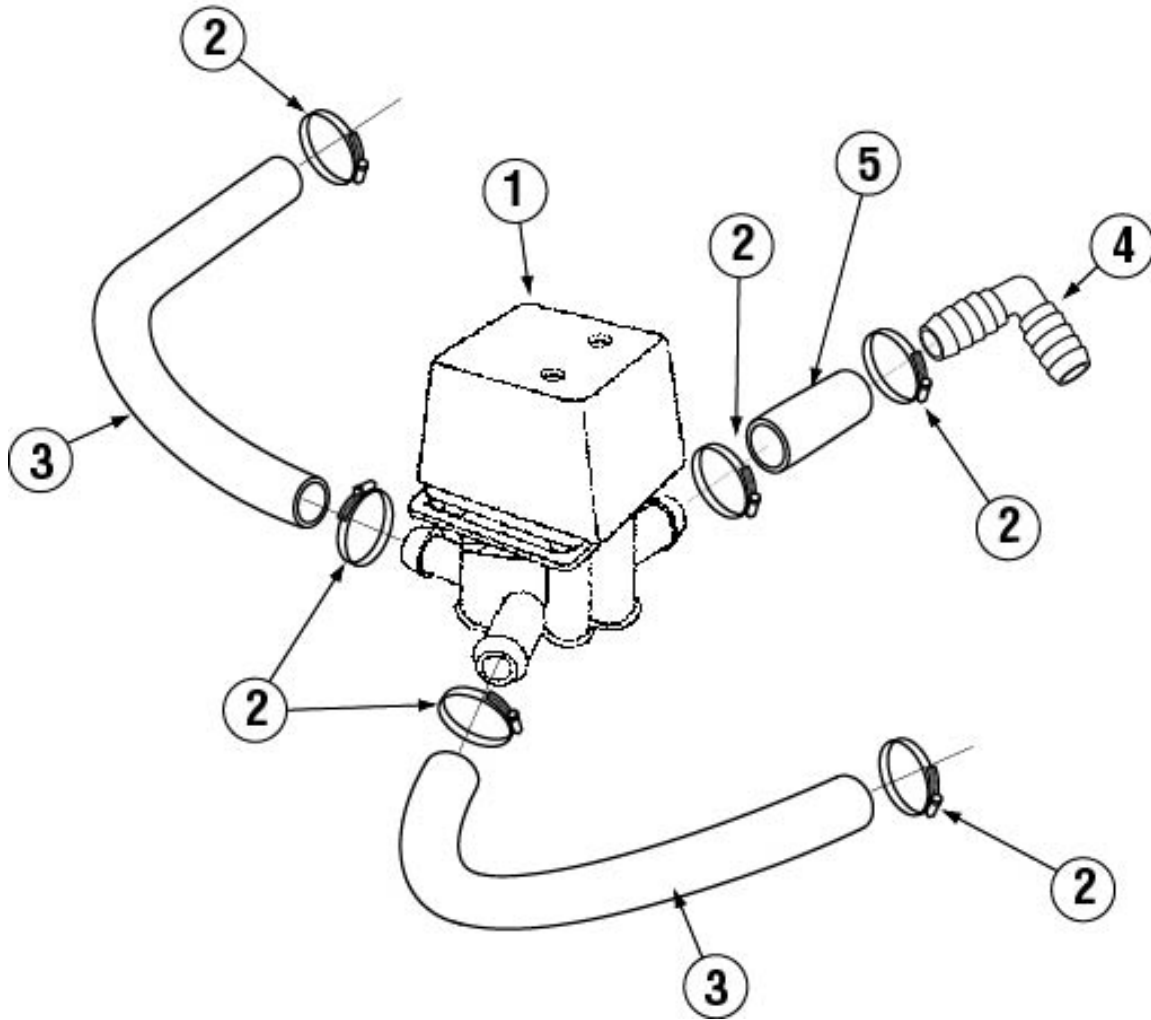
ITEM NO.	NO. REQ'D	P/N	DESCRIPTION
1	1	15602.00	SS Braided Hose 20"
2	1	00798.00	SS Braided Hose 20"
3	1	03604.50	Fitting with Flow Disk
4	1	03604.10	SS Solenoid Valve Flow Disc
5	1	03604.00	SS Water Solenoid Valve 1/2"
6	4	00760.00	5/8" Compression x 1/2" MIP Adapter
7	1	03605.00	Plumbing tube CMA-180UC
8	2	00940.50	10-32 X 3/8 Truss Head Screw
9	2	03801.60	10-32 KEPS Lock Nut
10	1	14508.60	Plumbing Bracket (180-UC)
11	1	03604.30	Dema Valve Repair Kit 1/2"
12	1	41062.00	1/2" Strainer Ball Valves
13	1	00214.60	1/4" Compression x 1/2" MIP FTG
14	2	00743.10	1/2" T,FxFxF
15	1	05007.60	Vacuum Breaker Line
16	1	03624.00	1/2" Vacuum Breaker – Watts

ITEM NO.	NO. REQ'D	P/N	DESCRIPTION
17	1	00739.50	Vacuum Breaker Cap, SS
18	1	03624.25	Vacuum Breaker Bonnet, Brass
19	1	03623.00	1/2" Vac. Breaker Repair Kit – Watts
20	2	03614.00	Nipple, Brass 1/2" Close
21	1	03232.00	1/8" Male Plug
22	1	13669.45	SS Mixing Chamber CMA-180UC
23	1	00798.00	1/2" SS Braided Hose
24	2	00915.00	1/4"-20 SS Nut
25	2	00724.00	1/2" Compression x 1/2" MIP Adapter
26	1	13304.53	Long Support Bracket
27	1	00798.40	SS Braided Hose 12"
28	1	13604.10	1/2 x 1/8 Bushing Brass
29	1	13605.45	Pressure Gauge for CMA-180UC
30	1	41015.60	Water Solenoid Coil Only
31*	1	13658.00	Inlet Check Valve

\* For the machines with chemical dispenser

1.4.7. Drain System Assembly

CMA-180UC DRAIN SYSTEM ASSEMBLY

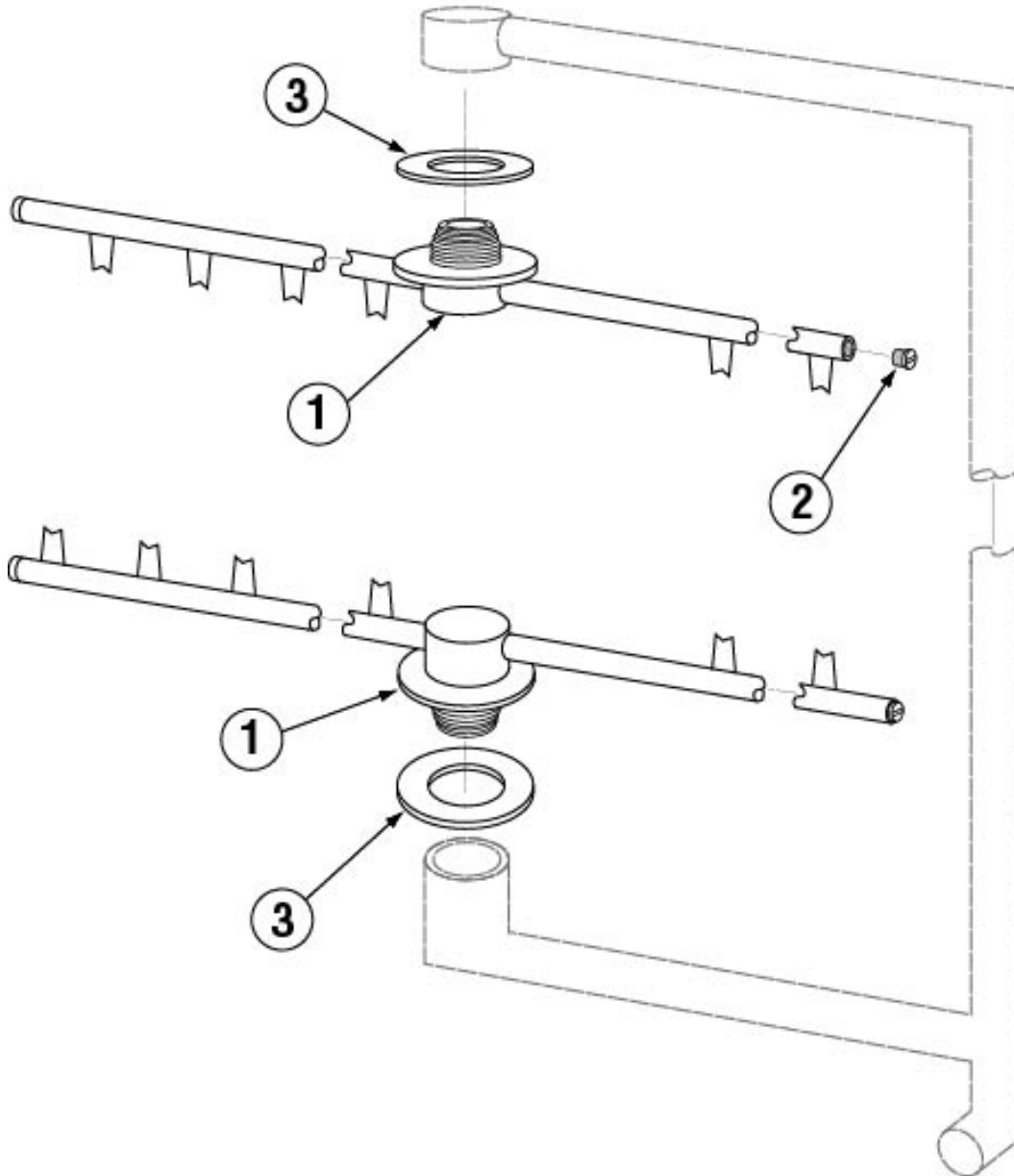


ITEM NO.	NO. REQ'D	P/N	DESCRIPTION
1	1	04103.00	L1X/L1-C Drain Valve 120V
2	6	03101.00	Hose Clamp #16-1"
3	2	15601.60	Hose 1" ID 14" Pump to Manifold

ITEM NO.	NO. REQ'D	P/N	DESCRIPTION
4	1	04106.00	1" 90° Barb x Barb Elbow
5	1	15601.10	Black Drain Hose 1" ID X 3 1/2"

1.4.8. Wash System

CMA-180UC WASH SYSTEM

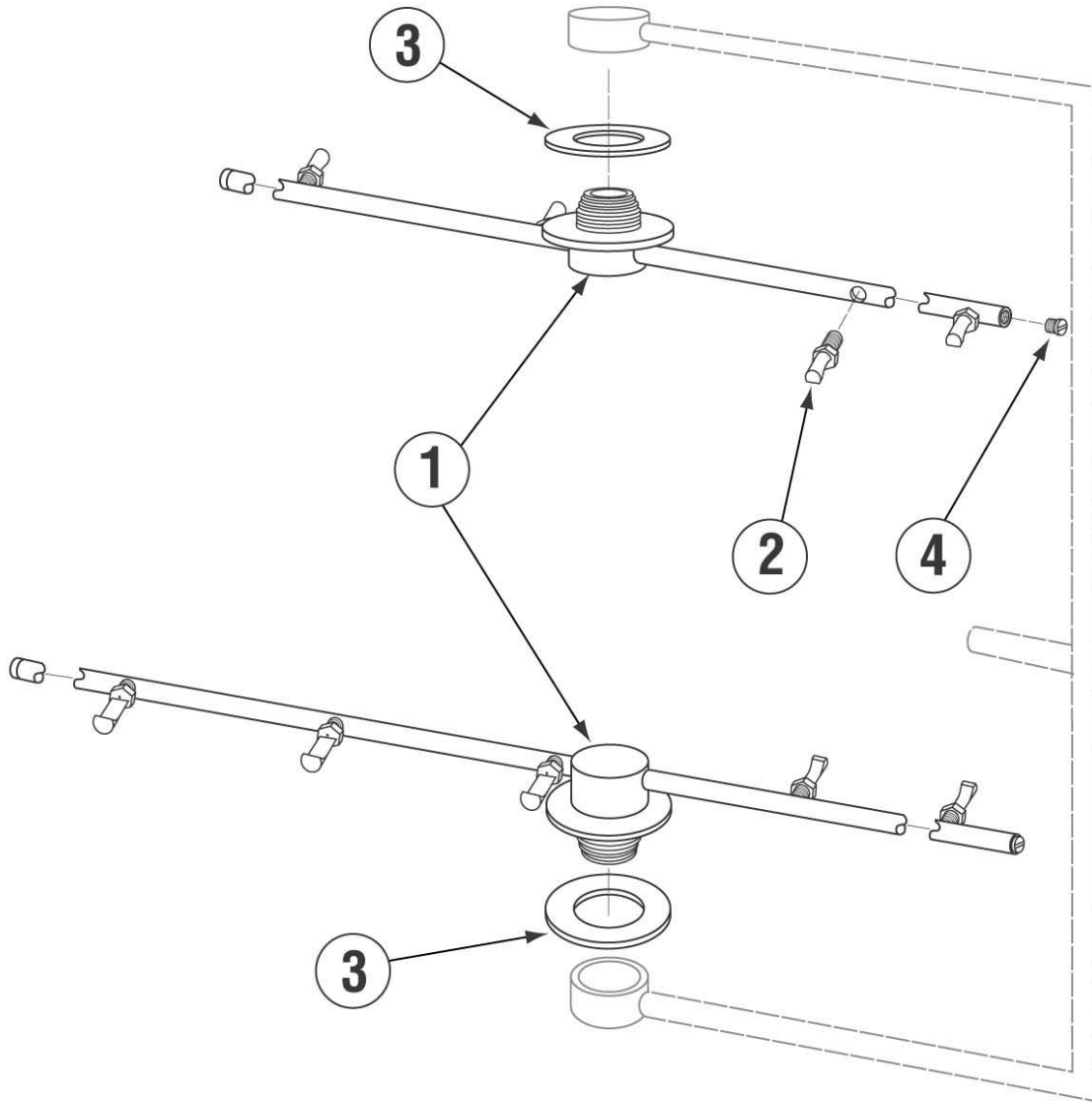


ITEM NO.	NO. REQ'D	P/N	DESCRIPTION
1	2	00304.45	Wash Arm
2	4	00308.20	Wash Arm End Plug

ITEM NO.	NO. REQ'D	P/N	DESCRIPTION
3	2	04305.17	Red Silicon Gasket 1/16" Thick

1.4.9. Rinse System

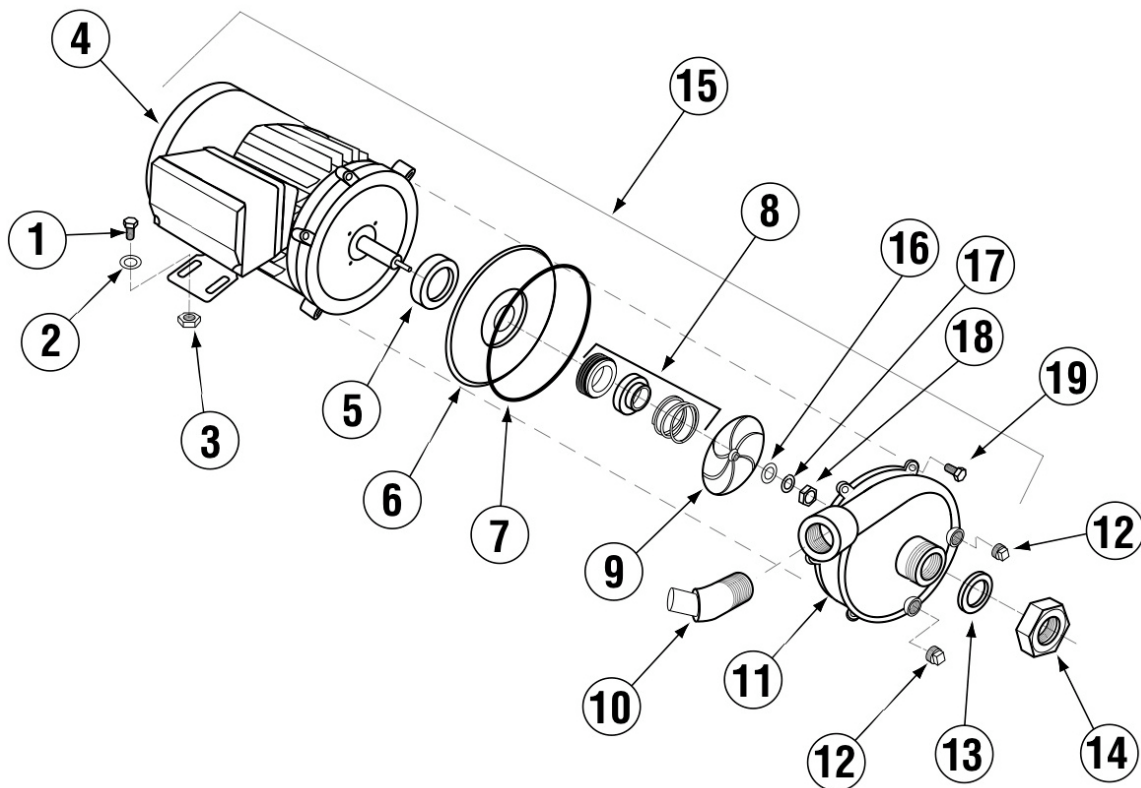
CMA-180UC RINSE SYSTEM



ITEM NO.	NO. REQ'D	P/N	DESCRIPTION
1	2	00304.65	Rinse Arm CMA-180UC
2	8	13304.55	SS Final Rinse Spray Jet – HT

ITEM NO.	NO. REQ'D	P/N	DESCRIPTION
3	2	04305.17	Red Silicon Gasket 1/16" Thick
4	4	00308.17	Rinse Arm End Cap

1.4.10. S/S Pump Assembly (Effective August 2009)

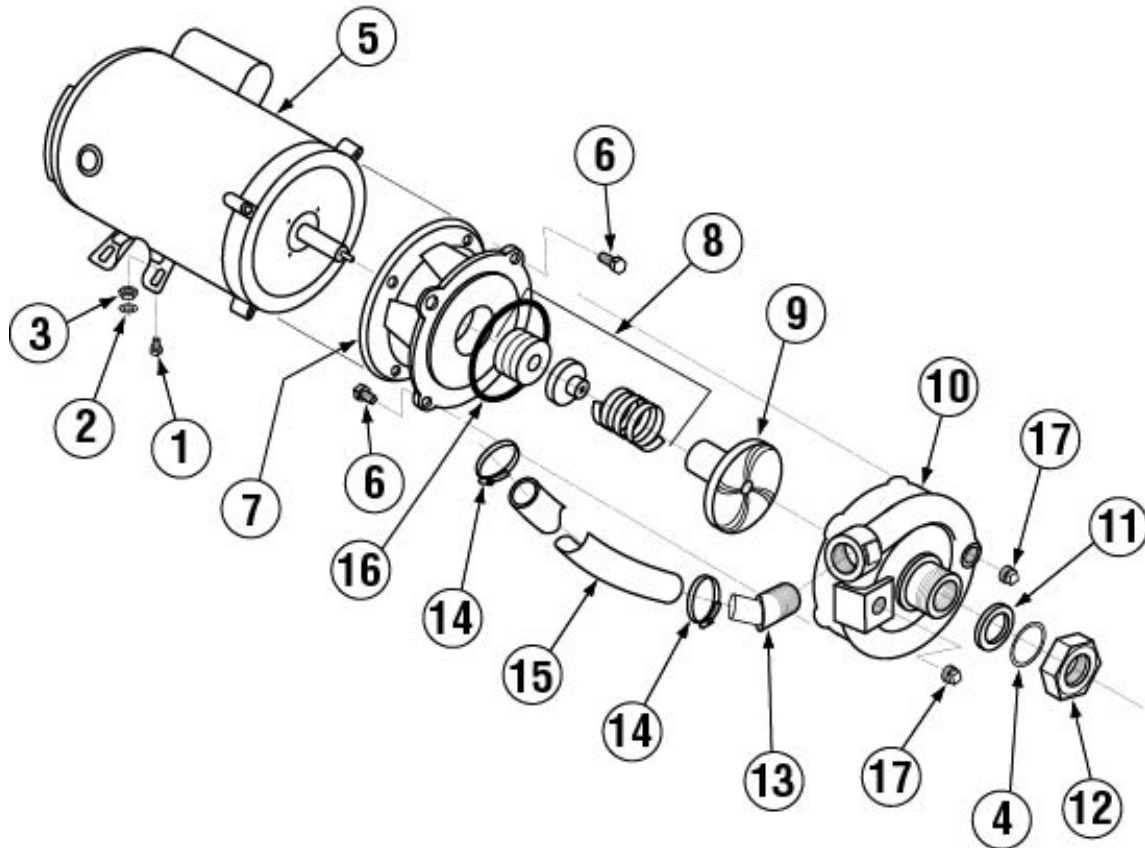


ITEM NO.	NO. REQ'D	P/N	DESCRIPTION
1	4	00908.00	5/16"-18 x 5/8" SS Hexhead Bolt
2	4	00926.00	5/16" SS Washer
3	4	00913.00	5/16"-18 Hex Nut
4	1	00201.60	SS Wash Pump Motor 220v
5	1	00201.96	Slinger Washer Cone Shape
6	1	03224.60	SS Pump Backplate
7	1	03226.70	Volute O-Ring For SS Pump
8	1	00206.70	SS Pump Seal Kit
9	1	03222.70	SS Pump Impeller
10	1	04604.00	^35 Deg Elbow MIP X Barb

ITEM NO.	NO. REQ'D	P/N	DESCRIPTION
11	1	04206.75	SS Pump Cover
12	2	00238.00	3/8" Male Plug
13	1	00208.40	Slip Joint Nut O Ring Buna
14	1	00207.00	Slip Joint Nut 1 1/2 x 1 1/4
15	1	00200.70	Includes Items 4,5,6,7,8,9,and 11
16	1	03222.74	Flat Washer 8 mm
17	1	03222.72	Shaft Nut Lock Washer 8mm
18	1	13809.70	SS Pump Seal Shaft Nut 8mm
19	6	00914.70	Socket Head Screw 10 mm

1.4.11. Pump System Assembly

CMA-180UC PUMP SYSTEM ASSEMBLY

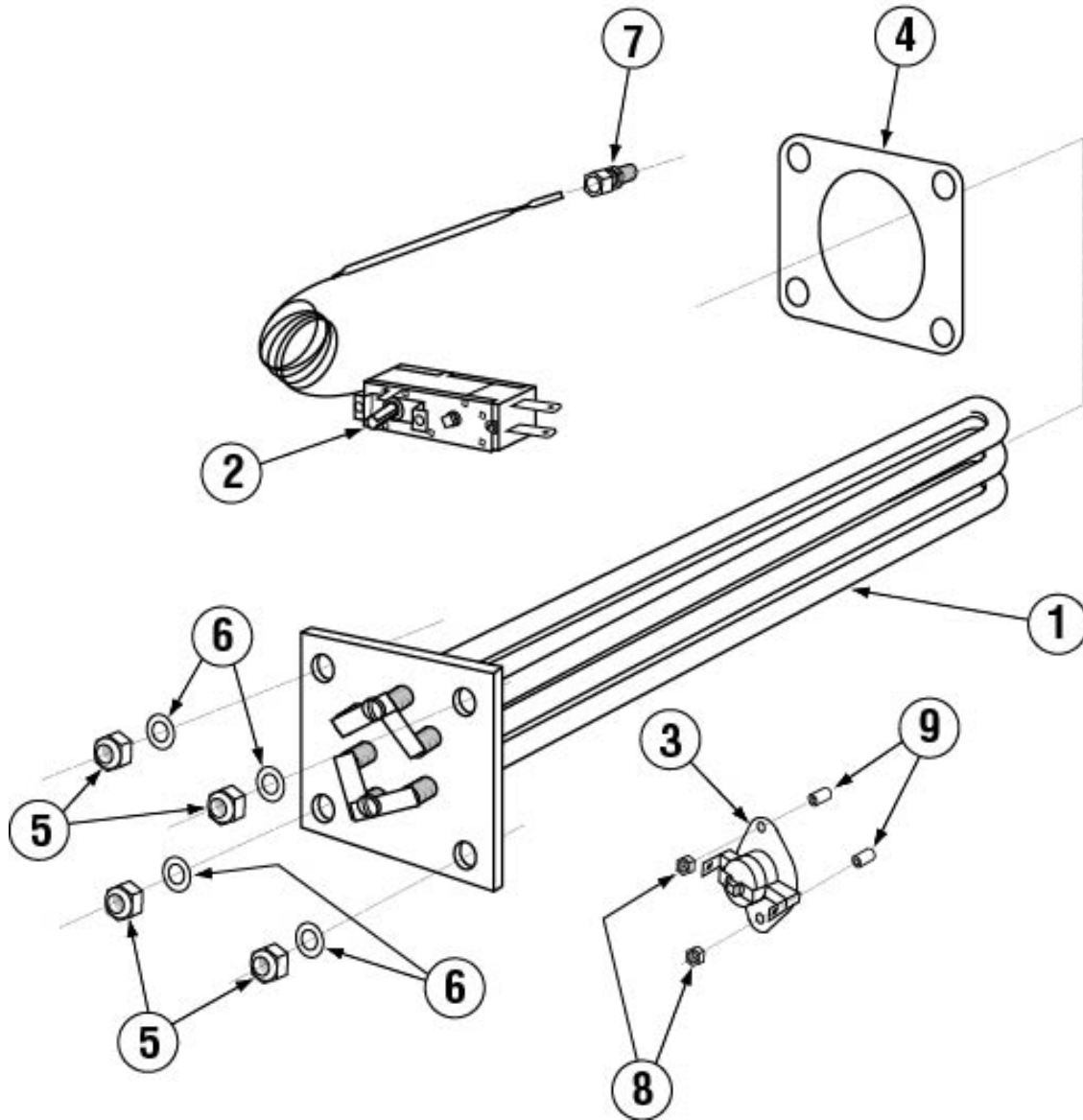


ITEM NO.	NO. REQ'D	P/N	DESCRIPTION
1	4	00908.00	5/16"-18 SS Hexhead Bolt
2	4	00926.00	5/16" SS Washer
3	4	00913.00	5/16"-18 Hex Nut
4	1	00208.20	Slip Joint Ring
5	1	00201.66	Water Pump Motor for CMA-180UC
6	8	00921.00	3/8"-16 x 3/4" Hex Bolt
7	1	03224.00	Pump Base (Mount)
8	1	00206.00	Pump Seal Kit
9	1	03222.05	Impeller L-1M

ITEM NO.	NO. REQ'D	P/N	DESCRIPTION
10	1	04206.00	Pump Cover
11	1	00208.00	Slip Joint Nut Gasket
12	1	04204.00	L-1X Compression Nut 2.5"
13	1	00213.50	Pump Fitting
14	2	00301.00	1" Hose Clamp #16
15	1	03108.61	Transfer Hose 1" Reinforced 22"
16	1	03226.00	Pump "O" Ring Gasket
17	2	00238.00	3/8" Male Plug

1.4.12. Old Heater Assembly (Square Flange)

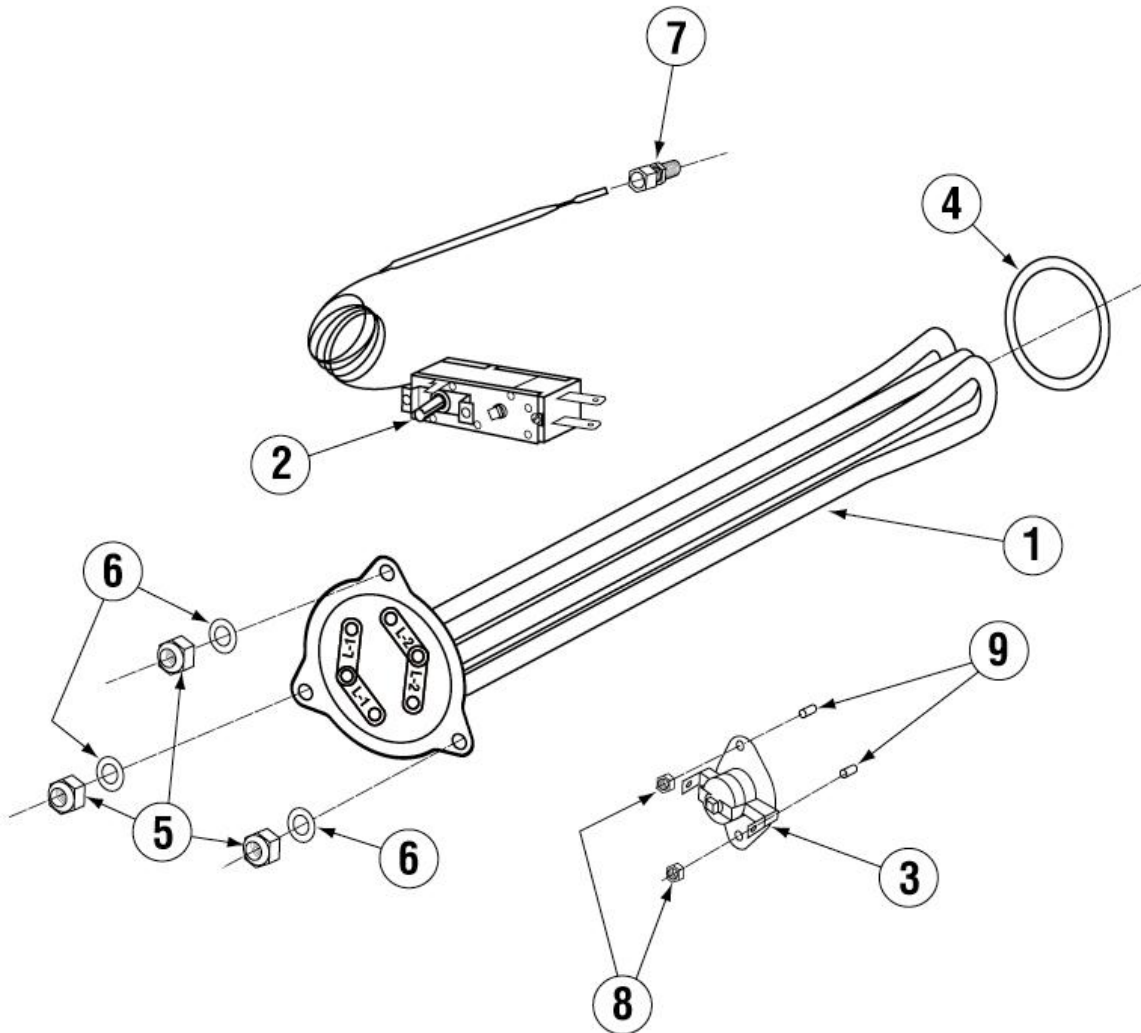
CMA-180UC HEATER ASSEMBLY



ITEM NO.	NO. REQ'D	P/N	DESCRIPTION
1	1	15517.00	Heater 6kW for CMA-180UC
2	1	13417.89	Heater Thermostat
3	1	17523.60	High Limit Switch 200°F
4	1	15517.10	Heater Gasket
5	4	13805.00	5/16"-18 Nylon Insert Lock Nut

ITEM NO.	NO. REQ'D	P/N	DESCRIPTION
6	4	00926.00	5/16" SS Washer
7	1	40116.00	1/4" Compression x 1/4" MIP FTG
8	2	00965.00	6-32 Lock Nut
9	2	17524.00	High Limit Switch Spacer

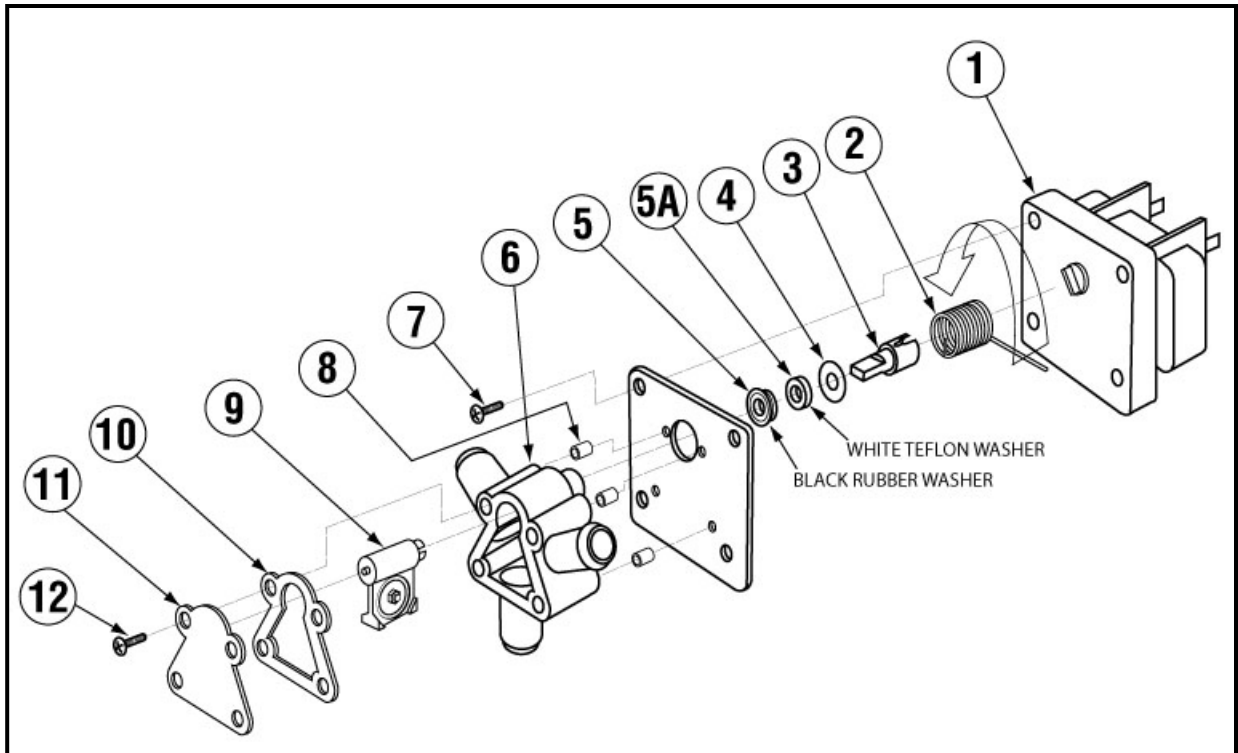
1.4.13. New Heater Assembly (Triangular Flange)



ITEM NO.	NO. REQ'D	P/N	DESCRIPTION
1	1	15518.00	Heater 6kW 220V Triangular Flange
2	1	13417.89	Heater Thermostat
3	1	17523.60	High Limit Switch 200°F
4	1	15518.10	Gasket for Triangular Flange Heater
5	3	13805.00	5/16"-18 Nylon Insert Lock Nut

ITEM NO.	NO. REQ'D	P/N	DESCRIPTION
6	3	00926.00	5/16" SS Washer
7	1	40116.00	1/4" Compression x 1/4" MIP FTG
8	2	00965.00	6-32 Lock Nut
9	2	17524.00	High Limit Switch Spacer

1.4.14. Drain Valve



ITEM NO.	NO. REQ'D	P/N	DESCRIPTION
1	1	04103.21	Drain Motor 115V, 60Hz
2	1	04103.14	Drain Valve Spring
3	1	04103.20	Drain Valve Drive Pin
4	1	04103.19	Drain Valve Washer (Thin)
5	1	04103.17	Drain Seal Washer (Black)
5A	1	04103.23	Drain Seal Washer (White)
6	1	04103.12	Drain Valve Housing
7	4	00941.00	#10-32 x 5/8" Pan Head Screw
8	3	04103.24	Drain Valve Housing Spacer
9	1	04103.16	Hinge/Seal
10	1	04103.15	Drain Housing Gasket
11	1	04103.13	Drain Valve Housing Cover
12	4	04103.18	#8 x 5/8" Self-Threading Screw