

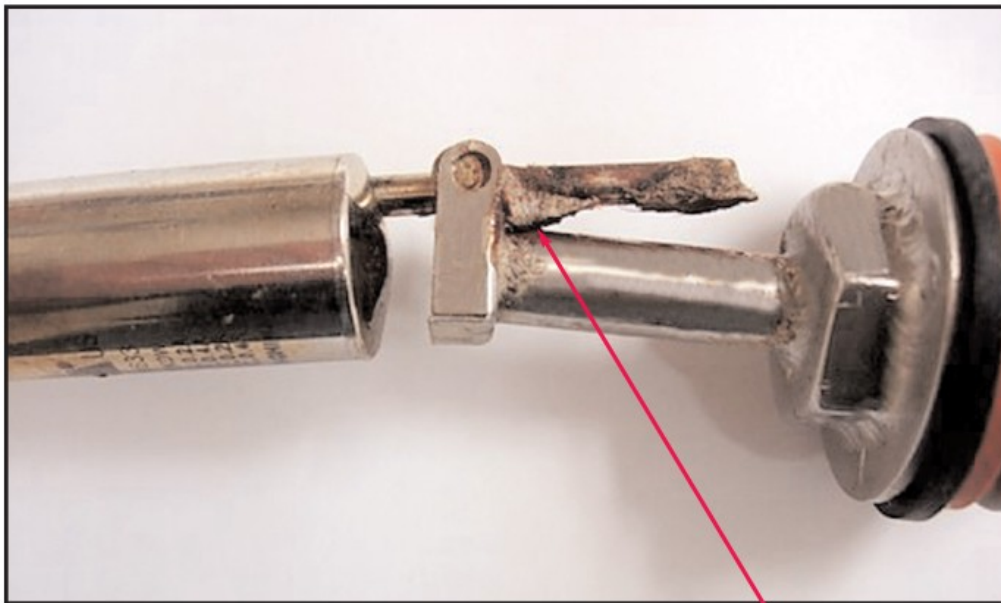
SERVICE BULLETIN

Date: JUNE 5, 2009

Log Number: 117

Models Affected: L-1X, L-1X16, GL-X, CMA-180, CONVEYORS

Subject: FLOAT SWITCH P/N 13463.10



In surveying returned float switches from the field, it has become apparent that many of the returned floats are not defective but dirty, lacking preventative maintenance. See photograph above.

Caution: The build-up of contaminants (steel pad shavings, iron in the water etc. that have been drawn to the magnet) must be cleaned during regular preventative maintenance visits. If float is not maintained properly, it will not perform properly, and could cause heater damage.



12700 KNOTT AVENUE
GARDEN GROVE, CALIF. 92841
800-854-6417 • 714-898-8781
FAX 714-895-2141
www.cmadishmachines.com