



# EQUIPMENT UPDATE

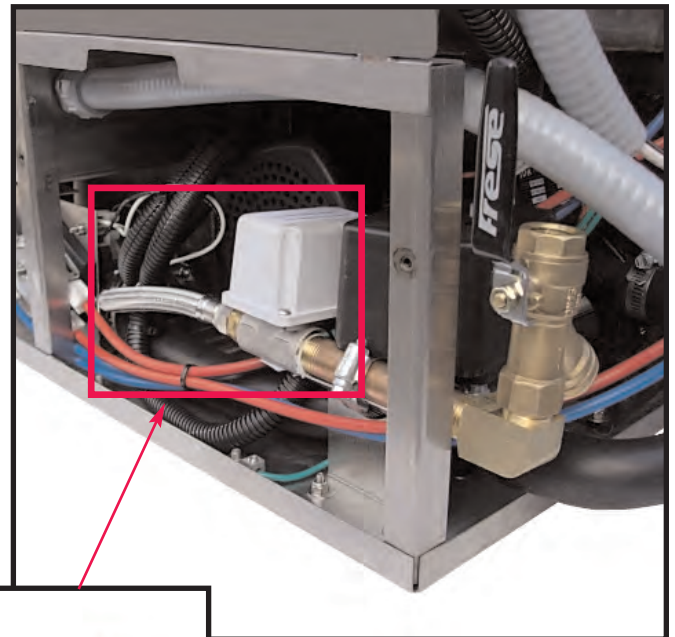
**Effective Date:** APRIL 15, 2008

**Log Number:** EU-08-399

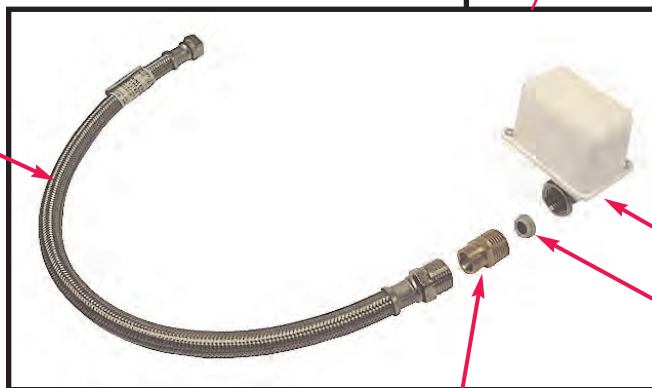
**Part Description:** Dema Valve: 03604.00

**Model Affected:** 180-UC, E-MODEL AND EVA MODEL SERIES

CMA will soon begin manufacturing the model 180-UC, E and EVA series dishmachines with a more durable stainless steel DEMA Water Valve . Each valve will have a spare diaphragm stored within the valve coil cover for the first year to help make the transition easier. The new Dema Valve made of stainless steel will be more compatible with various water conditions. This change will improve our product reliability and longevity. The CMA 180-UC will be equipped with a DEMA Flow Disc feature that has been placed on the exit side of the water valve. The Flow Disc will reduce final rinse pressures above 25 psi to the standard recommended 20 psi.



**20" BRAIDED HOSE  
P/N 00798.00**



**DEMA VALVE P/N 03604.00**

**FLOW DISC P/N 03604.10**

**FITTING WITH FLOW DISC P/N 03604.50**



12700 KNOTT STREET  
GARDEN GROVE, CALIF. 92841  
800-854-6417 • 714-898-8781  
FAX 714-895-2141  
[www.cmadishmachines.com](http://www.cmadishmachines.com)

